

# The Sustainable Groundwater Management Act (SGMA)

June 8, 2017

# Troubled California Groundwater

- \* There are 515 groundwater basins and sub-basins (“basins”) defined by the California Department of Water Resources (DWR)
- \* 127 are in trouble, i.e., classified by DWR as High- or Medium Priority
- \* Types of overdrafted groundwater basins in trouble in 2014:
  - \* Connected to the ocean: seawater intrusion
  - \* Not connected to the ocean: loss of ground elevation and basin storage capacity



# GSA Map Viewer

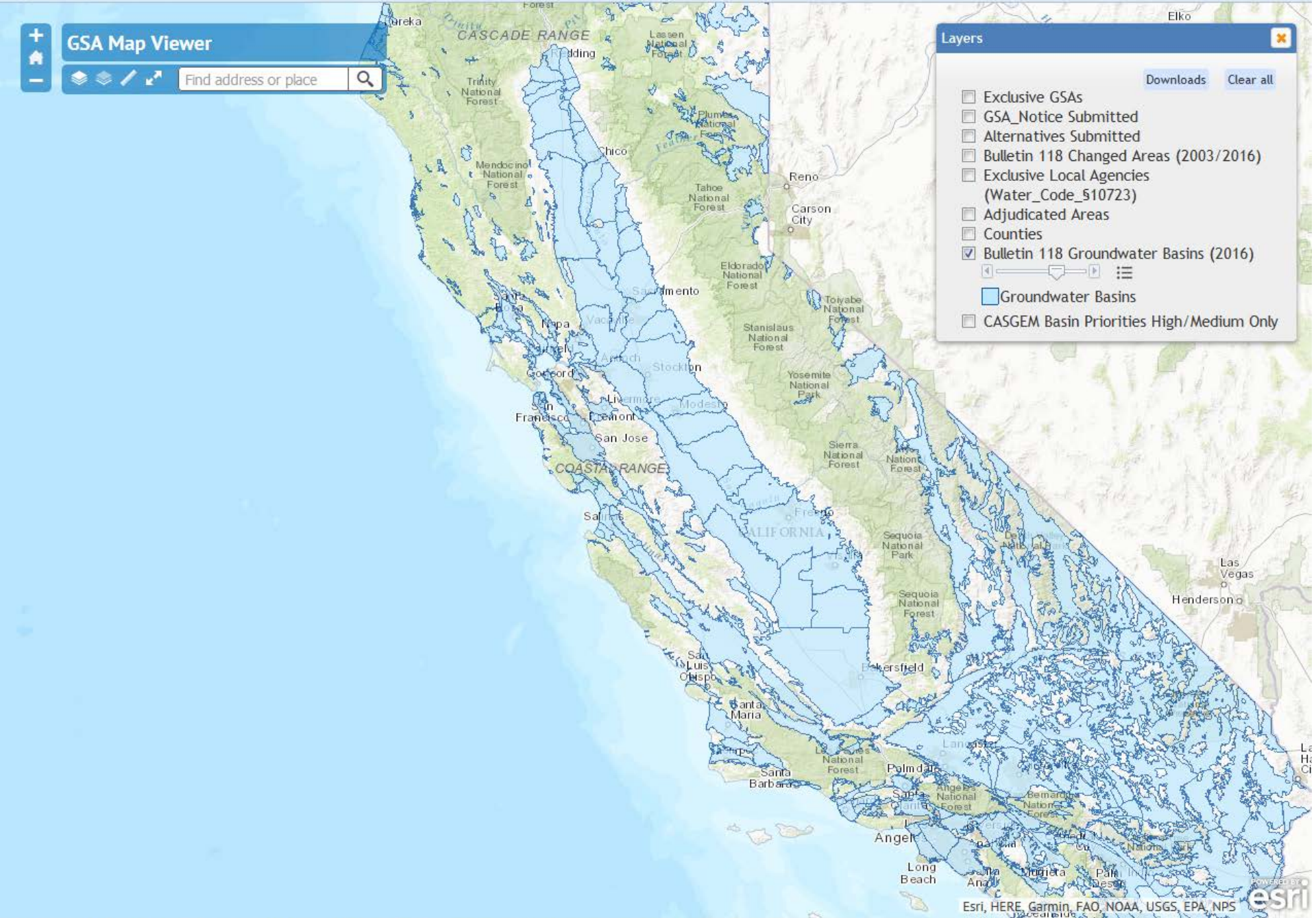
Find address or place

**Layers** Downloads Clear all

- Exclusive GSAs
- GSA\_Notice Submitted
- Alternatives Submitted
- Bulletin 118 Changed Areas (2003/2016)
- Exclusive Local Agencies (Water\_Code\_510723)
- Adjudicated Areas
- Counties
- Bulletin 118 Groundwater Basins (2016)
- CASGEM Basin Priorities High/Medium Only

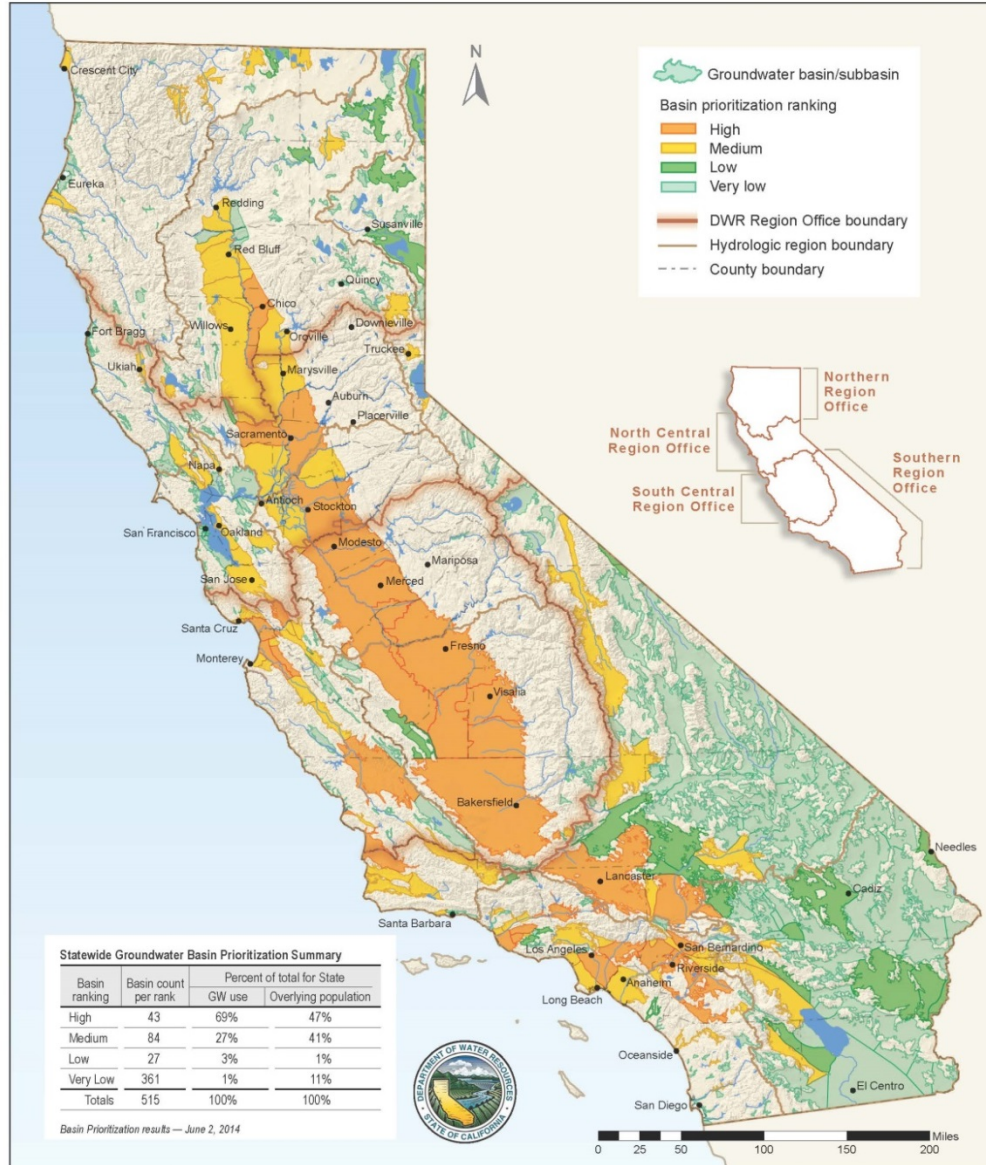
Groundwater Basins

CASGEM Basin Priorities High/Medium Only



# DWR California Statewide Groundwater Elevation Monitoring (CASGEM) Program

## CASGEM Groundwater Basin Prioritization



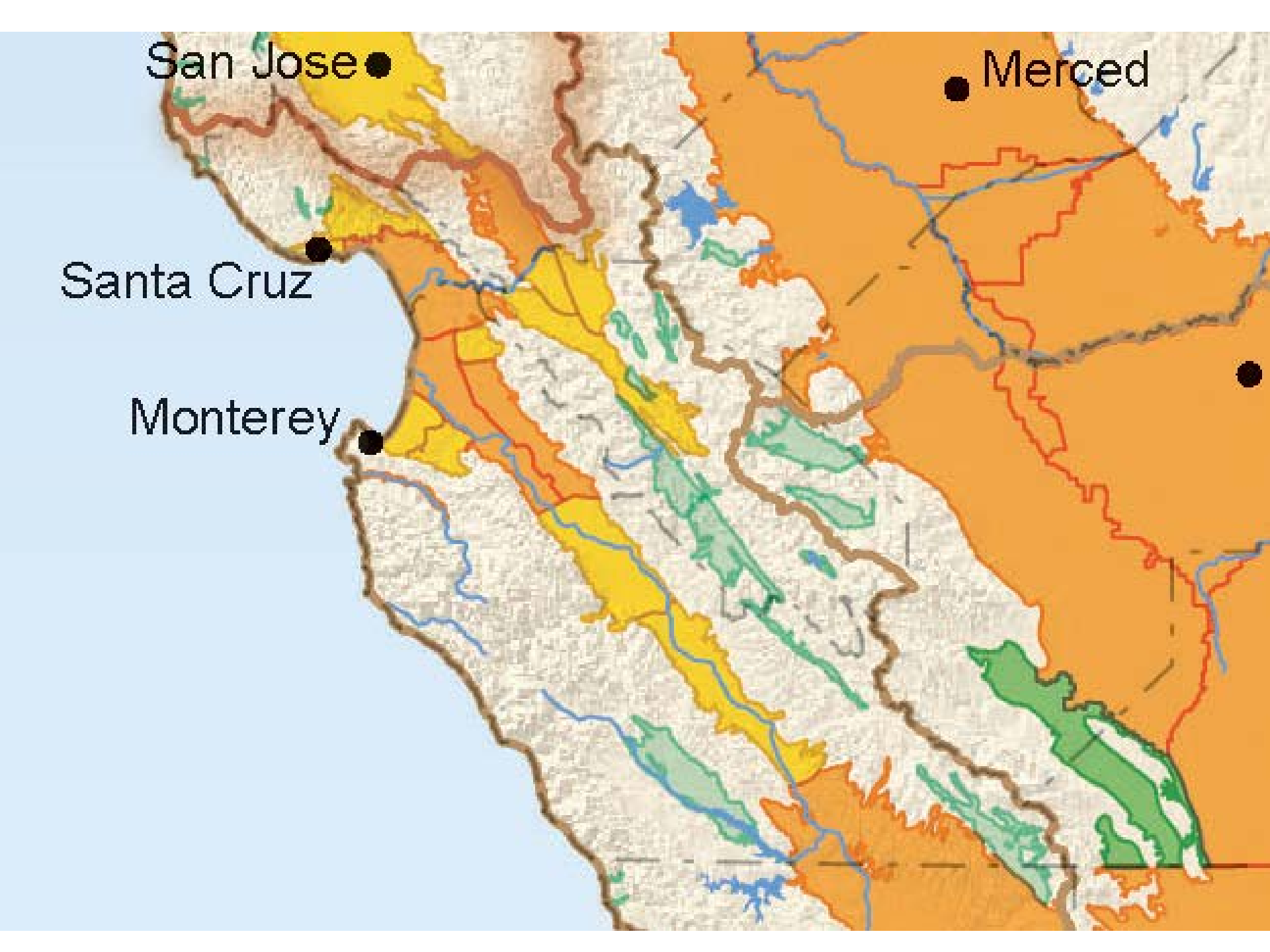


San Jose ●

Merced ●

Santa Cruz ●

Monterey ●



# Sustainable Groundwater Management Act (SGMA)

- \* “Requires groundwater-dependent regions to halt overdraft and bring basins into balanced levels of pumping and recharge.”<sup>1</sup>
- \* Focuses on 127 basins.
- \* The State desires locally developed, funded and implemented plans.
- \* Federal land and adjudicated basins are exempt.

<sup>1</sup> <http://www.water.ca.gov/groundwater/sgm/index.cfm>

# The Steps of SGMA

1. One or more eligible Public Agencies take responsibility for each basin (they become a GSA).
2. The GSA(s) writes a **sustainability plan** for the basin.
  - a) Requires pumping measurement and reporting.
  - b) May limit and/or charge for pumping (to reduce demand).
  - c) May build re-charge projects (to increase supply).
  - d) “The plan may, but is not required to, address undesirable results that occurred before, and have not been corrected by, January 1, 2015.” SGMA 10727.2(b)(4). Required Plan Elements
3. GSA gets plan approved by DWR in consultation with SWRCB.
4. GSA implements the approved plan.



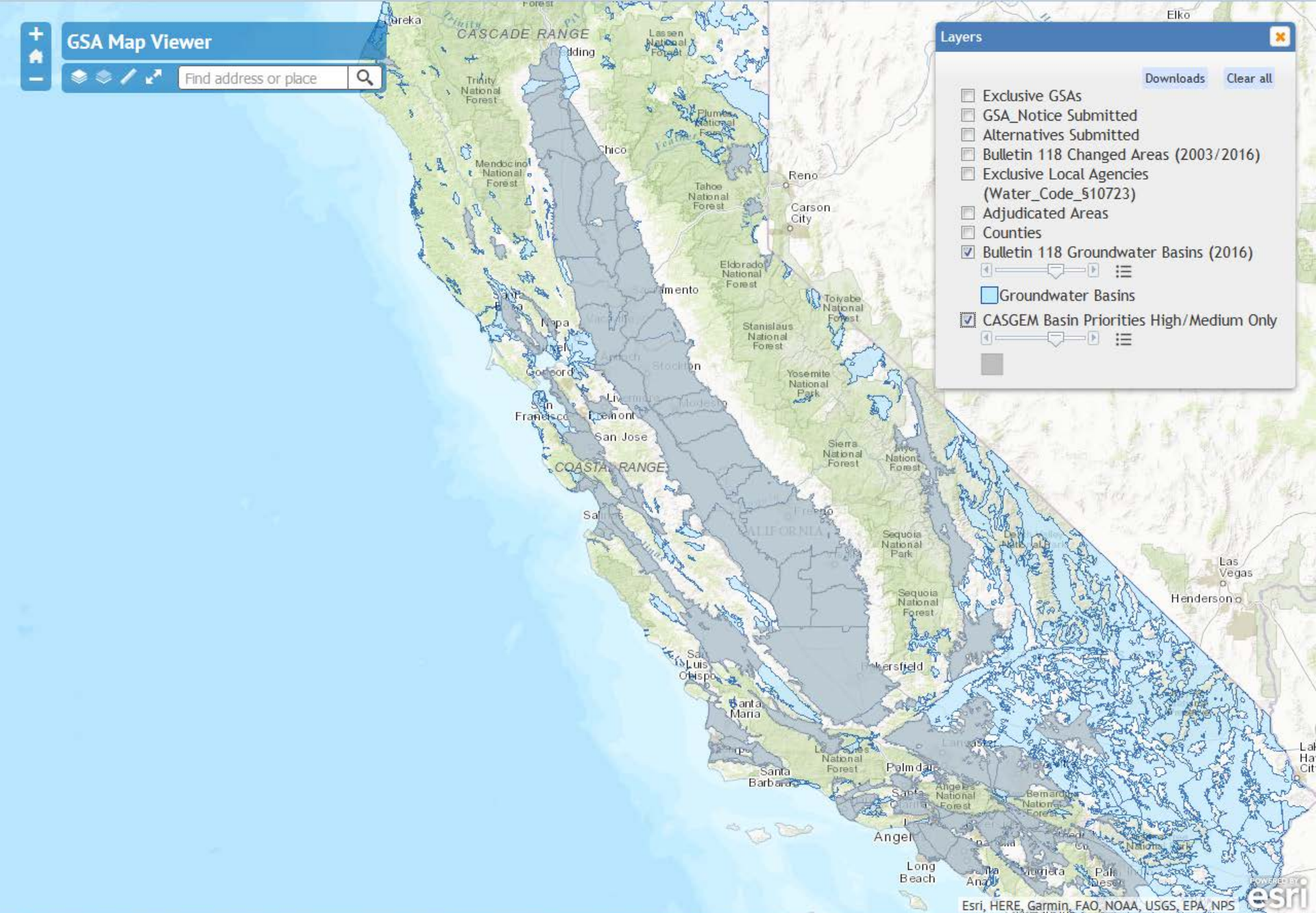
# GSA Map Viewer

Find address or place

## Layers

Downloads Clear all

- Exclusive GSAs
- GSA\_Notice Submitted
- Alternatives Submitted
- Bulletin 118 Changed Areas (2003/2016)
- Exclusive Local Agencies (Water\_Code\_510723)
- Adjudicated Areas
- Counties
- Bulletin 118 Groundwater Basins (2016)
- Groundwater Basins
- CASGEM Basin Priorities High/Medium Only







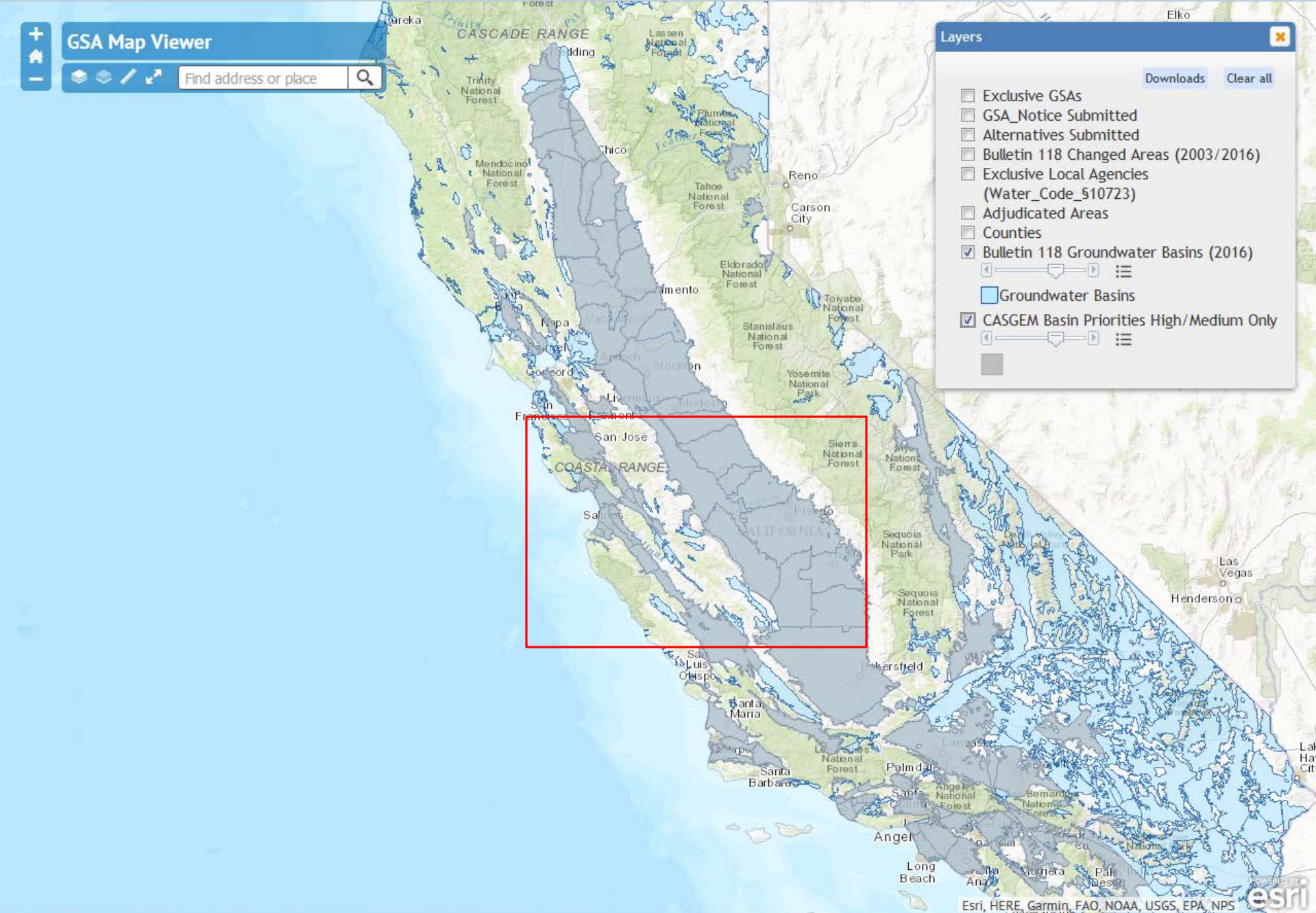
# GSA Map Viewer

Find address or place

## Layers

Downloads Clear all

- Exclusive GSAs
- GSA\_Notice Submitted
- Alternatives Submitted
- Bulletin 118 Changed Areas (2003/2016)
- Exclusive Local Agencies (Water\_Code\_510723)
- Adjudicated Areas
- Counties
- Bulletin 118 Groundwater Basins (2016)
- CASGEM Basin Priorities High/Medium Only





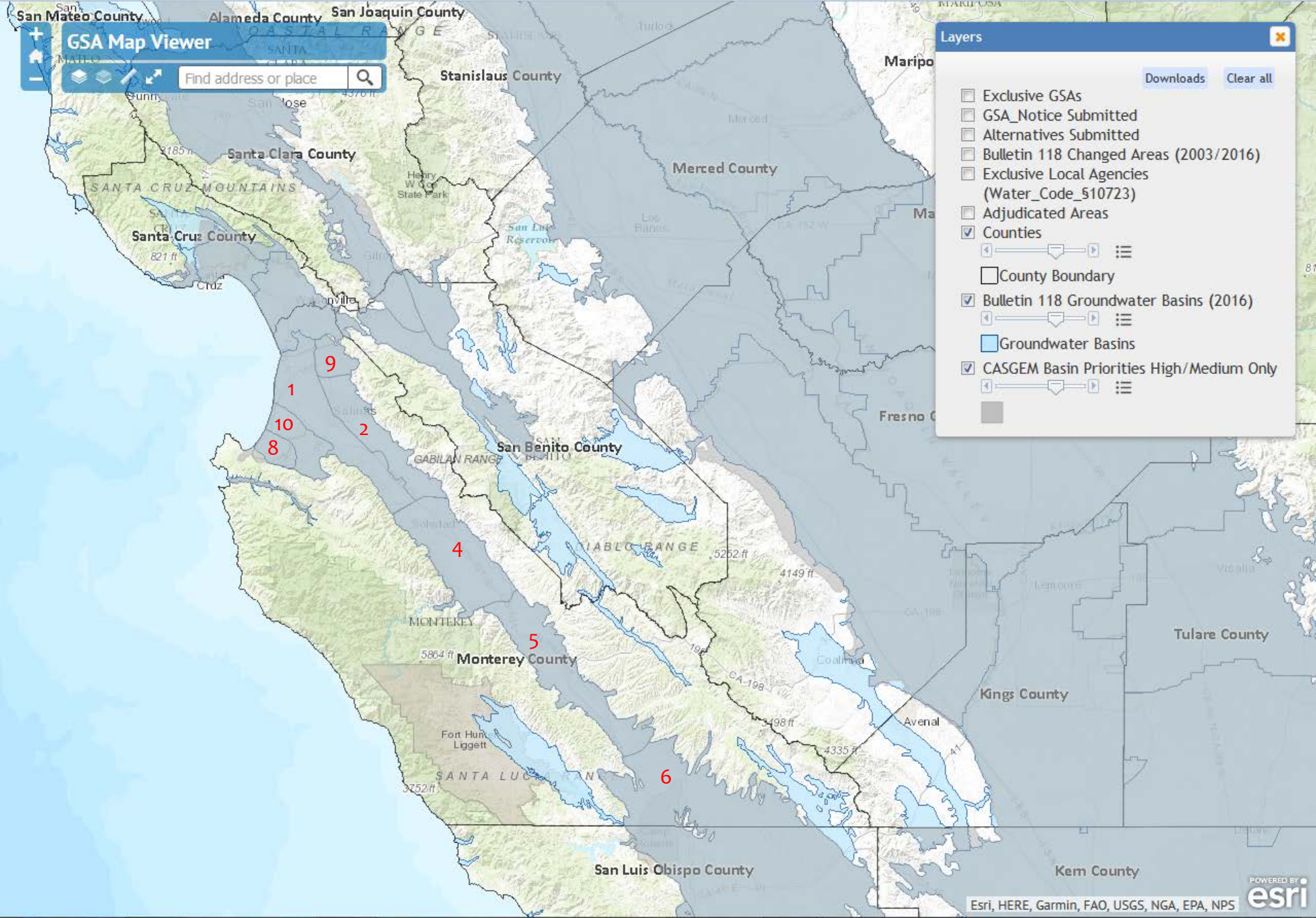
**GSA Map Viewer**

Find address or place

**Layers**

Downloads Clear all

- Exclusive GSAs
- GSA\_Notice Submitted
- Alternatives Submitted
- Bulletin 118 Changed Areas (2003/2016)
- Exclusive Local Agencies (Water\_Code\_510723)
- Adjudicated Areas
- Counties
- County Boundary
- Bulletin 118 Groundwater Basins (2016)
- Groundwater Basins
- CASGEM Basin Priorities High/Medium Only



# The Monterey County Situation

- \* 12 basins.
- \* One is adjudicated (Seaside).
- \* Four are high-priority (180/400, Eastside, Paso Robles and Carmel ).
- \* Four are medium-priority (Monterey, Langlely, Forebay & Upper Valley).
- \* Groundwater is better for farming than surface water, so most farms use groundwater.
- \* Marina Coast's supply is 100% Salinas Valley groundwater.

# Focus on the Ord Community

- \* All these interactive maps are available at:
  - \* <http://sgma.water.ca.gov/webgis/index.jsp?appid=gasmaster&rz=true>



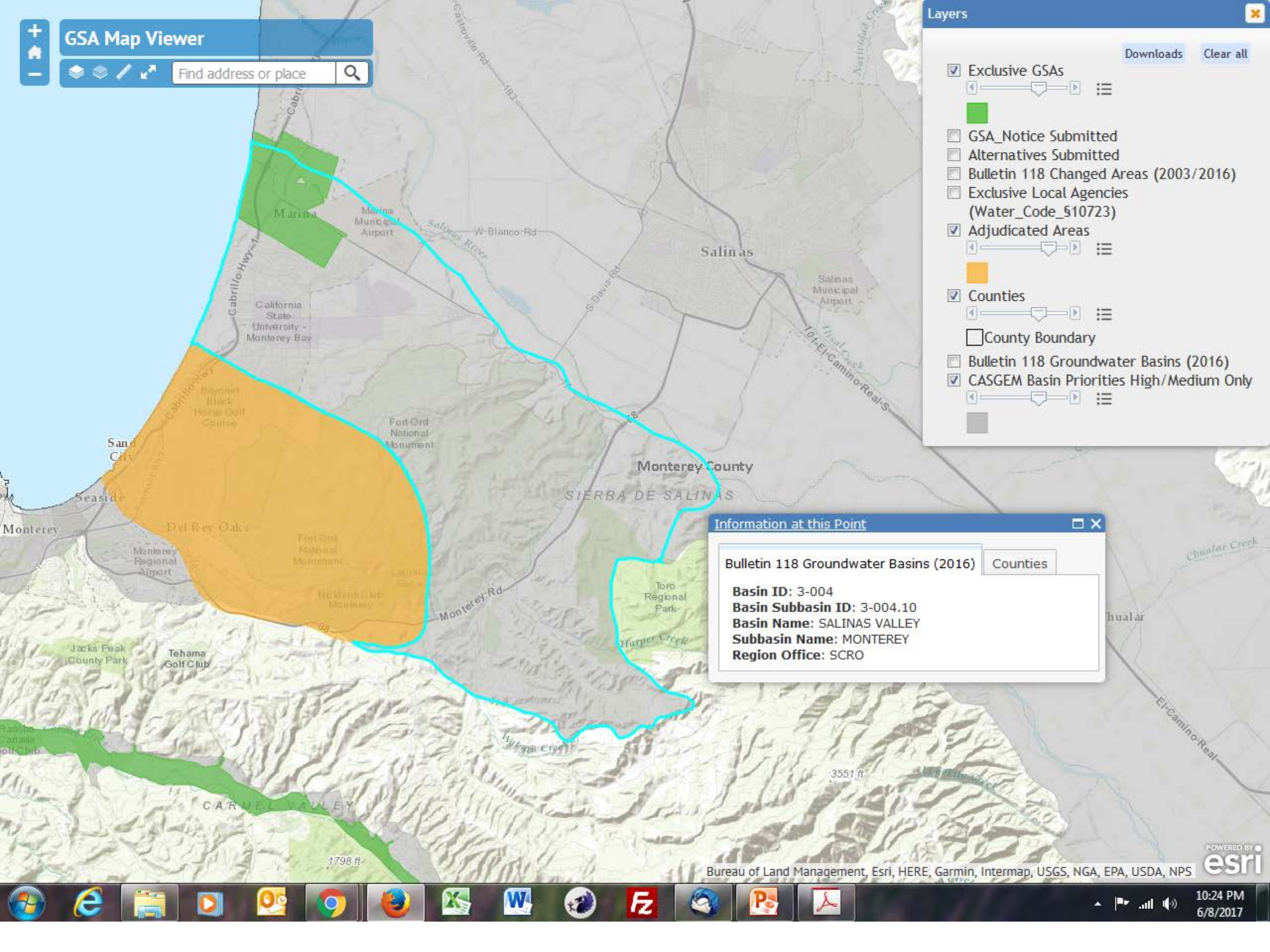
Find address or place

- Exclusive GSAs
- GSA\_Notice Submitted
- Alternatives Submitted
- Bulletin 118 Changed Areas (2003/2016)
- Exclusive Local Agencies (Water\_Code\_510723)
- Adjudicated Areas
- Counties
- County Boundary
- Bulletin 118 Groundwater Basins (2016)
- CASGEM Basin Priorities High/Medium Only

Information at this Point

Bulletin 118 Groundwater Basins (2016) Counties

**Basin ID:** 3-004  
**Basin Subbasin ID:** 3-004.10  
**Basin Name:** SALINAS VALLEY  
**Subbasin Name:** MONTEREY  
**Region Office:** SCRO



Layers

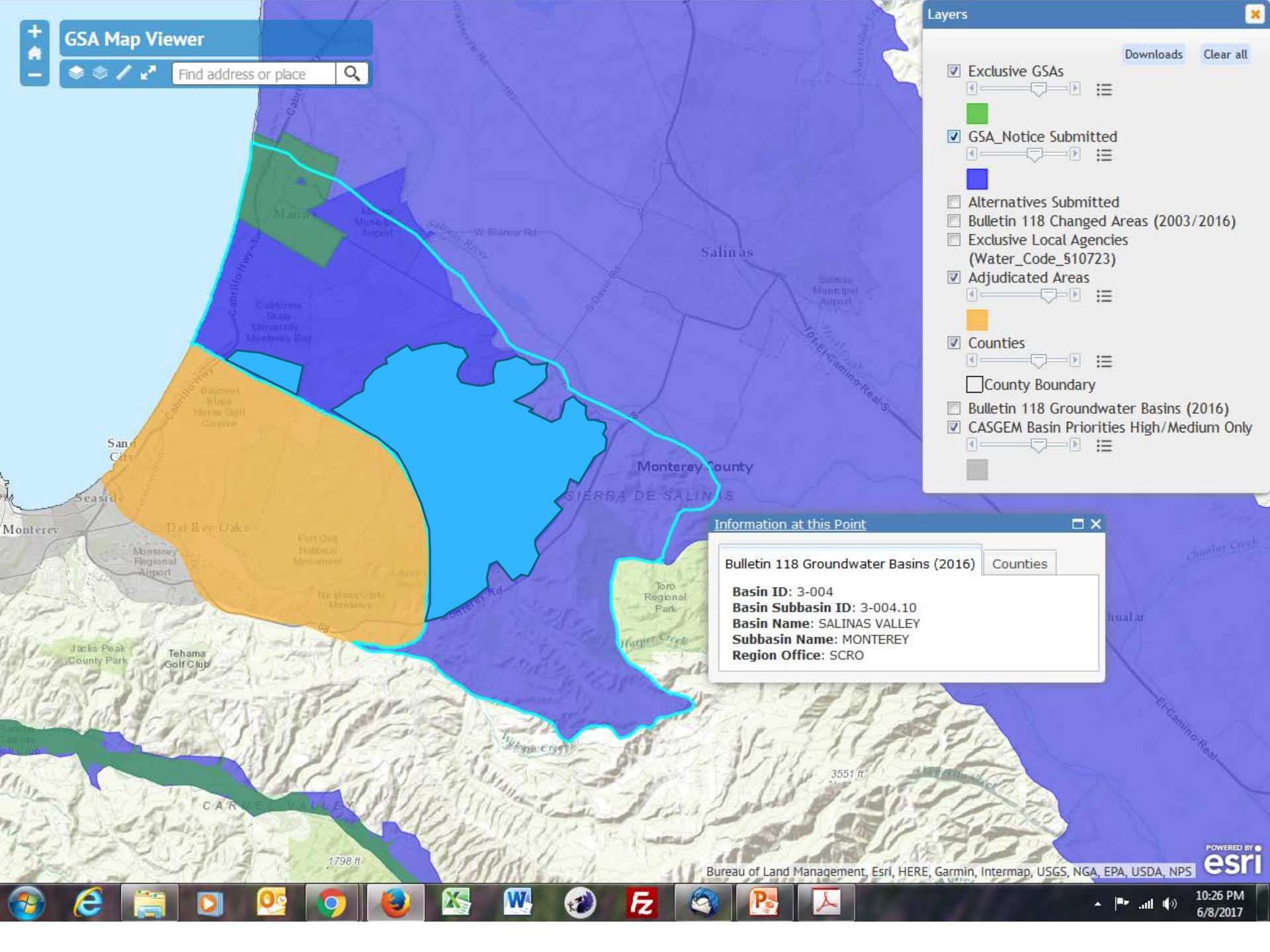
Downloads Clear all

- Exclusive GSAs
  -
- GSA\_Notice Submitted
  -
- Alternatives Submitted
- Bulletin 118 Changed Areas (2003/2016)
- Exclusive Local Agencies (Water\_Code\_\$10723)
- Adjudicated Areas
  -
- Counties
  - County Boundary
- Bulletin 118 Groundwater Basins (2016)
- CASGEM Basin Priorities High/Medium Only
  -

Information at this Point

Bulletin 118 Groundwater Basins (2016) Counties

**Basin ID:** 3-004  
**Basin Subbasin ID:** 3-004.10  
**Basin Name:** SALINAS VALLEY  
**Subbasin Name:** MONTEREY  
**Region Office:** SCRO





# Sustainability Plans

- \* SGMA says:

“A groundwater sustainability plan shall be developed and implemented for each medium- or high-priority basin by a groundwater sustainability agency to meet the sustainability goal...” (SGMA 10727(a))

- \* The Goal: restore each basin to the January 1, 2015 condition of the basin or better.

# Sustainability Plans, cont.

- \* A groundwater sustainability plan may be any of the following:
  - 1) A single plan covering the entire basin developed and implemented by one groundwater sustainability agency. (Doesn't apply to Monterey and 180/400 Basins)
  - 2) A single plan covering the entire basin developed and implemented by multiple groundwater sustainability agencies.
  - 3) ... multiple plans implemented by multiple groundwater sustainability agencies and coordinated pursuant to a single coordination agreement....



Layers

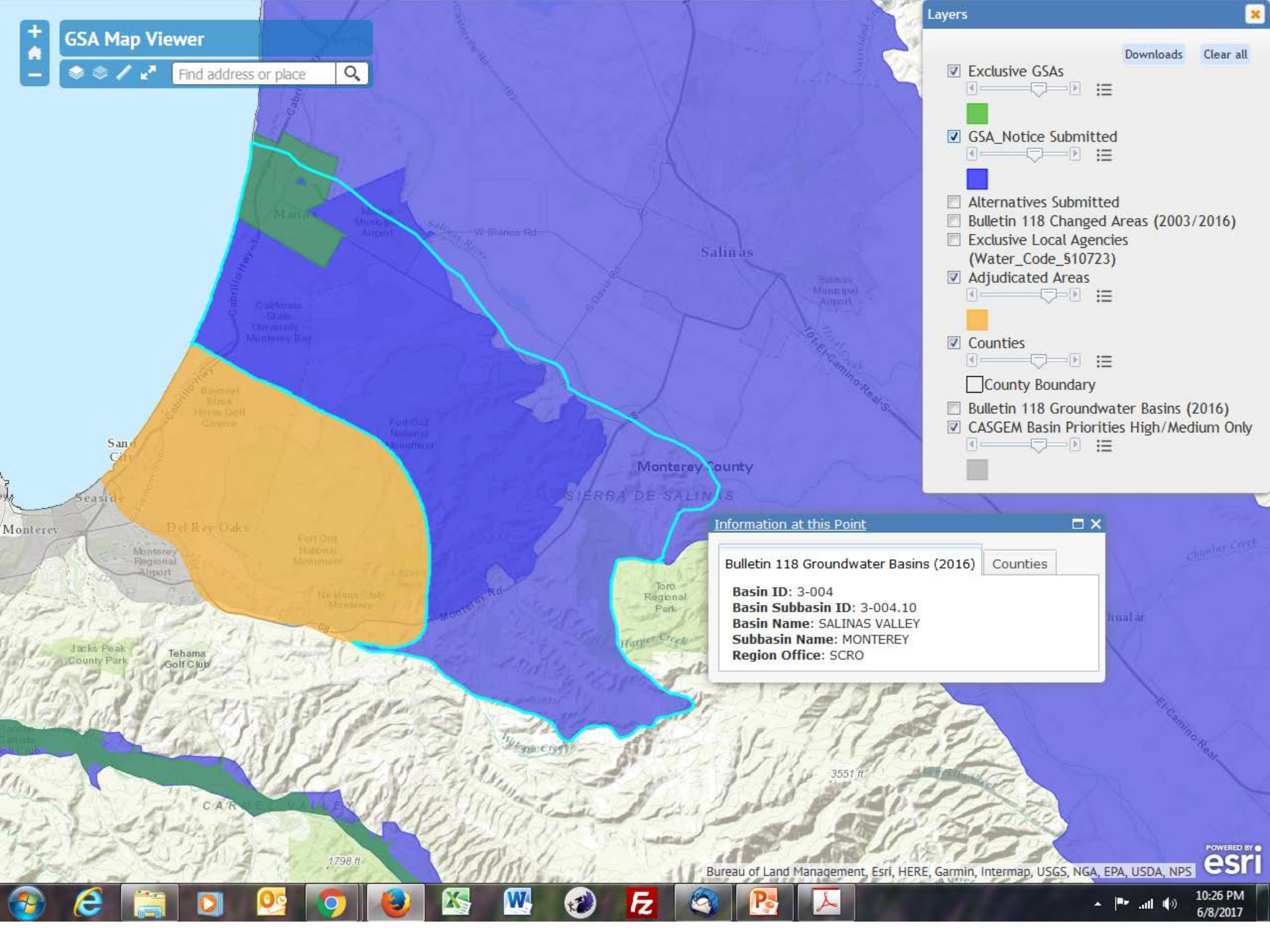
Downloads Clear all

- Exclusive GSAs
  -
- GSA\_Notice Submitted
  -
- Alternatives Submitted
- Bulletin 118 Changed Areas (2003/2016)
- Exclusive Local Agencies (Water\_Code\_\$10723)
- Adjudicated Areas
  -
- Counties
  - County Boundary
- Bulletin 118 Groundwater Basins (2016)
- CASGEM Basin Priorities High/Medium Only
  -

Information at this Point

Bulletin 118 Groundwater Basins (2016) Counties

**Basin ID:** 3-004  
**Basin Subbasin ID:** 3-004.10  
**Basin Name:** SALINAS VALLEY  
**Subbasin Name:** MONTEREY  
**Region Office:** SCRO



# Implications of SGMA for Ord Community and Central Marina

- \* By 2040, seawater intrusion into the 180/400 and Monterey Sub-basins must be reversed and conditions returned to as good or better than they were on January 1, 2015.
- \* MCWD and SVBGSA must work together on two plans.
- \* Additional costs.
- \* Pumping restrictions.
- \* Re-charge projects.
- \* Demand reduction projects.

# Will There Be Costs for MCWD Customer?

- \* Yes – they already exist.
- \* MCWD has been paying related costs for decades:
  - \* Costs of moving wells inland and deeper.
  - \* Costs of destroying and making safe shallower wells.
  - \* Costs of ERT/AES.
  - \* Payments to MCWRA to improve upstream basin recharge.

# Will There Be Pumping Restrictions?

- \* Yes – they already exist.
- \* In the early 1990's the Army and Marina Coast voluntarily agreed to pumping restrictions:
  - \* 6,600 AFY for the Ord Community.
  - \* 3,020 AFY for Central Marina.
  - \* 920 AFY for the Armstrong Ranch (via MCWD).
  - \* 500 AFY for the CEMEX property (via MCWD).
- \* Could there be further restrictions? Maybe, but we will try to make them unneeded.



# Will There Be Re-charge Projects?

- \* Yes.
- \* AES and ERT studies will help us understand the local re-charge possibilities.
- \* Two potential water sources:
  - \* Excess winter flows in the Salinas River.
  - \* Additional water from the Pure Water Monterey treatment plant.

# Will There Be Demand Reduction Projects?

- \* Yes – they already exist:
  - \* ULF Toilet, washing machine, recirculation pump rebates.
  - \* Landscape incentives.
  - \* Educational programs.
  - \* Water Conservation Commission.
  - \* Improved meter reading technologies.
  - \* Leak detection technologies.
  - \* Conservation rate structures.

# Why Should MCWD Be the GSA for the Ord Community?

- \* MCWD has longstanding relationships with:
  - \* FORA
  - \* US Army and BLM
  - \* CSUMB and UCMBEST
  - \* With the Ord Community land use jurisdictions and developers
- \* SGMA already requires coordination between SVBGSA and MCWD on the sustainability plans for the Monterey and 180/400 basins.
- \* Unlike SVBGSA, MCWD won't be saddled with the responsibility for six other sustainability plans.

# Why Should MCWD be the GSA for the Ord Community?, con't.

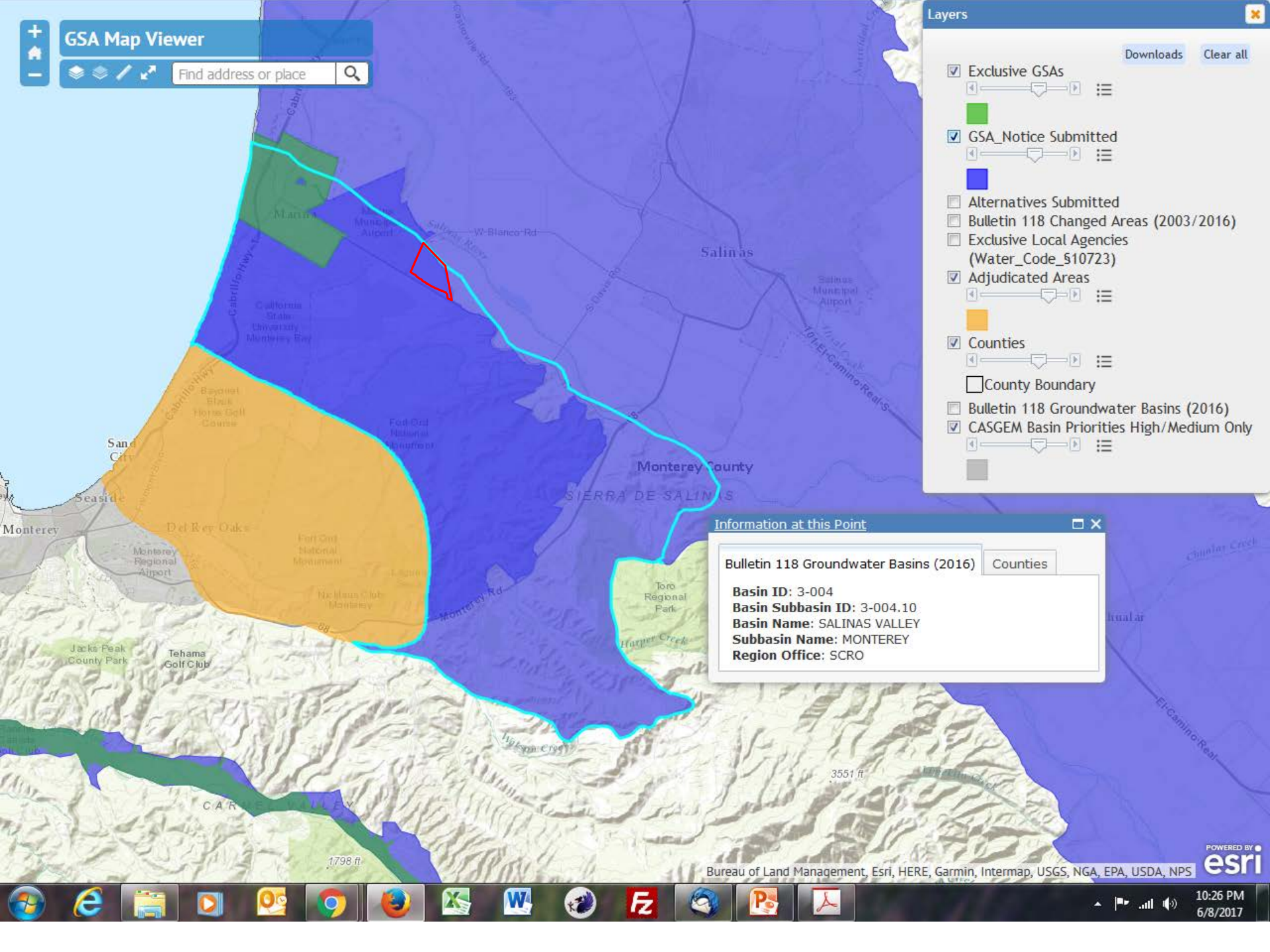
- \* MCWD owns all the infrastructure.
- \* MCWD owns all the water rights (except for the retained Army rights).
- \* MCWD is already managing its groundwater.
- \* MCWD will annex the existing Ord customers.
- \* With one small exception, MCWD is the only groundwater pumper in the contested part of the Ord Community.



Layers

Downloads Clear all

- Exclusive GSAs
- GSA\_Notice Submitted
- Alternatives Submitted
- Bulletin 118 Changed Areas (2003/2016)
- Exclusive Local Agencies (Water\_Code\_§10723)
- Adjudicated Areas
- Counties
- County Boundary
- Bulletin 118 Groundwater Basins (2016)
- CASGEM Basin Priorities High/Medium Only



Information at this Point

Bulletin 118 Groundwater Basins (2016) Counties

**Basin ID:** 3-004  
**Basin Subbasin ID:** 3-004.10  
**Basin Name:** SALINAS VALLEY  
**Subbasin Name:** MONTEREY  
**Region Office:** SCRO

# Why Does MCWD Have the Powers Needed to be the Ord Community

## GSA?

- \* DIVISION 12. COUNTY WATER DISTRICTS [30000 - 33901],  
ARTICLE 2. Water
- \* Section 31022: A district may operate water rights, works, property, rights, and privileges useful or necessary to **convey, supply, store**, or make use of water...
- \* Section 31024: A district may establish rules and regulations for the sale, distribution, and **use of water**...
- \* Section 31026: A district shall have the **power to restrict** the use of district water during any emergency caused by drought, **or other threatened or existing water shortage**,...