

Service Work Order for General Jim Moore Blvd. – 2nd Vote

*Jonathan Brinkmann,
Principal Planner
August 10, 2018*

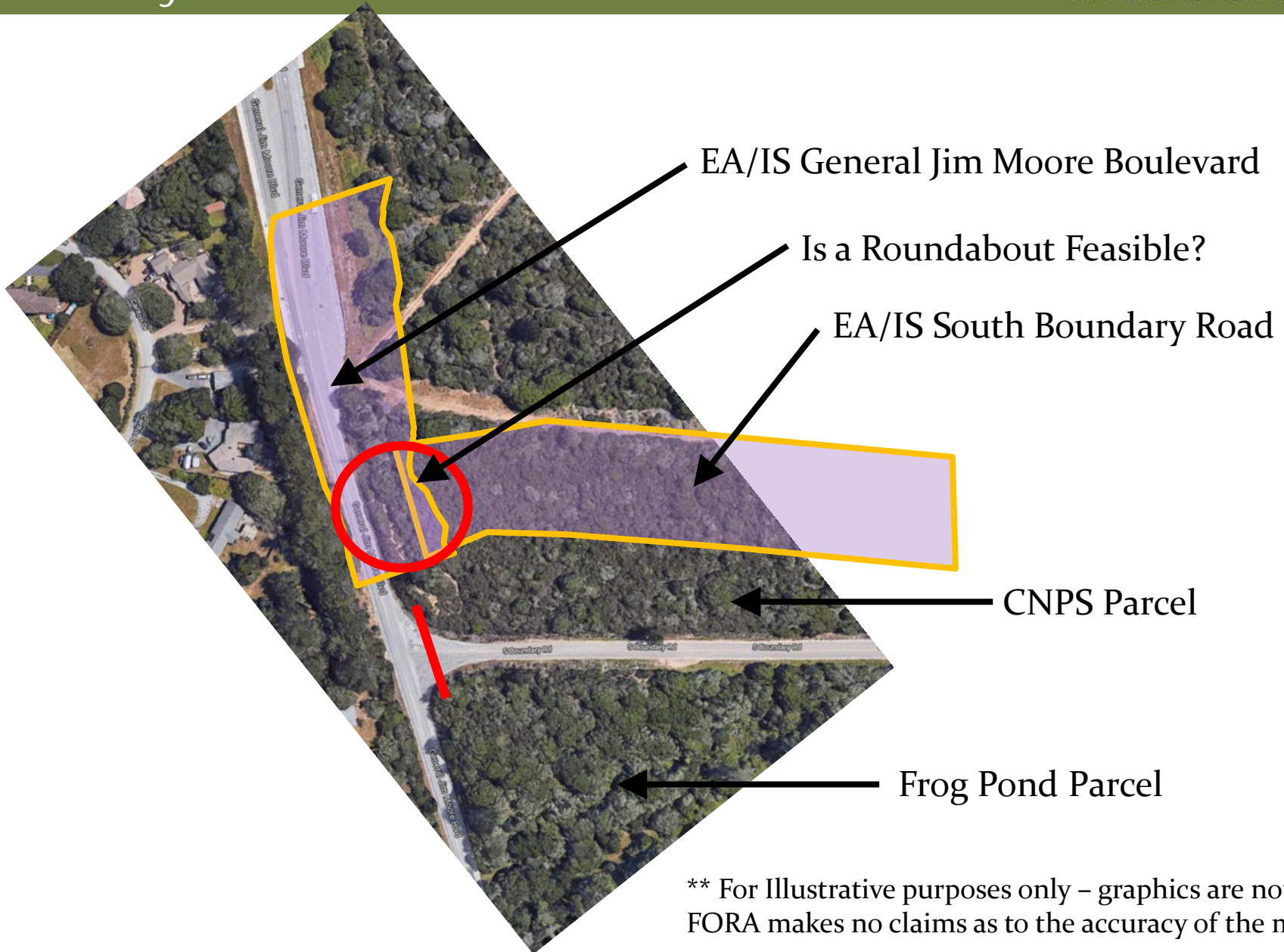
Project Description
Environmental Assessment / Initial Study
General Jim Moore Boulevard (2005)

*“The intersection of South Boundary Road with General Jim Moore Boulevard **would be relocated 300 linear feet to the north of its existing alignment.** This realignment and conversion would allow additional space for a right turn lane leading from State Highway 218 to the proposed South Boundary Road intersection with General Jim Moore Boulevard” – pg. 15*

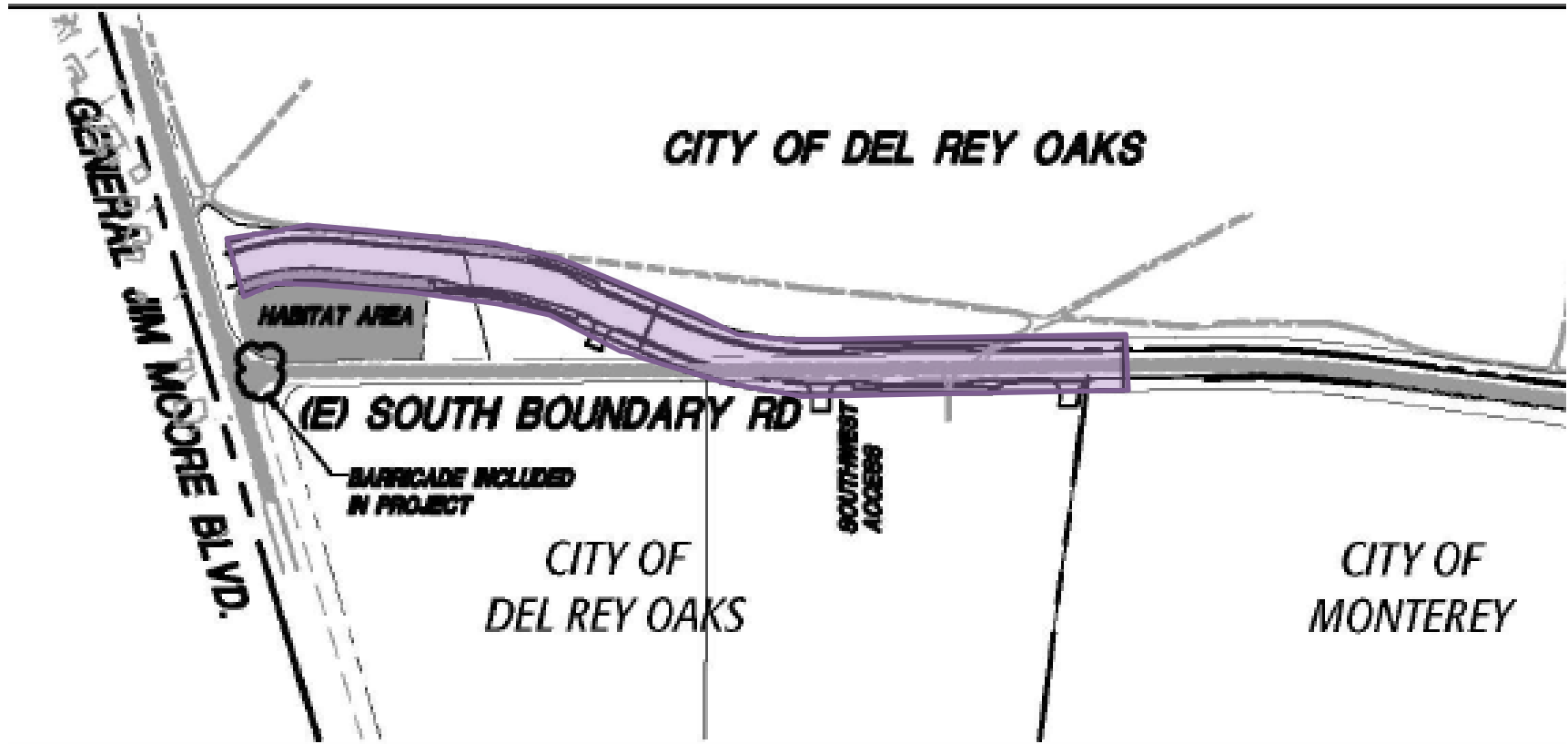
Project Description
Environmental Assessment / Initial Study
South Boundary Road (2010)

*“The South Boundary Road improvements include **relocating the existing** South Boundary Road/General Jim Moore Boulevard **intersection approximately 300 feet north of the existing intersection location** and realigning a portion of South Boundary Road approximately 600 linear feet eastward from the realigned intersection.” – pg. 2-*

General Jim Moore Boulevard @ SBR and Del Rey Oaks Resort Intersections



** For Illustrative purposes only – graphics are not to scale.
FORA makes no claims as to the accuracy of the maps



Project Description
Environmental Assessment / Initial Study
South Boundary Road

Questions ?