

A vibrant scene at a university plaza. In the background, a large brick building features a prominent clock tower with a white clock face. The plaza is filled with people, including children playing in a water fountain in the foreground. The fountain has several circular jets of water. A woman in a purple t-shirt is sitting on the edge of the fountain, looking at her phone. Other people are walking around, and a red canopy is visible in the distance. The sky is blue with some clouds, and there are green trees framing the scene.

Greetings from

FORT ORD

December 13, 2033

Dear FOR A & friends,

Having a great time at the
Fort Ord Monument! Thanks
for your LEADERSHIP back
in 2014 to make this such a
great sustainable place!

XOXO

The Kids



Fort Ord Reuse Authority

Monterey County, CA

94104



SUSTAINABILITY

Architecture



Urban Design









JEVON'S PARADOX



A LEED PLATINUM BUILDING

Sustainable Programs Urban Design with Nature, Copyright 2008 Doug Farr. This material is used by permission of John Wiley & Sons, Inc.



A LEED PLATINUM BUILDING?



A SUSTAINABLE NEIGHBORHOOD (BUILDING BLOCKS OF A SUSTAINABLE CORRIDOR)



**LIGHT
BULBS**

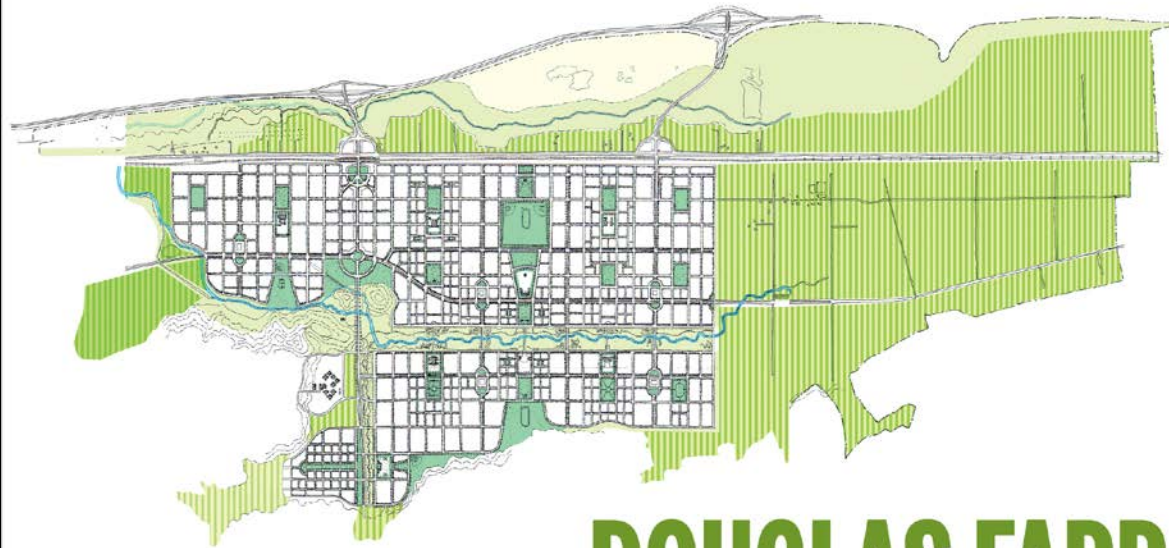
CARS

BUILDINGS

NEIGHBORHOODS

SUSTAINABLE URBANISM

URBAN DESIGN WITH NATURE



DOUGLAS FARR

FOREWORD

ANDRES DUANY

**Walkable, transit-served urbanism
integrated with high-performance buildings
and high performance infrastructure**



Sustainable Urbanism Defined

AREA: PREFERABLY 160 ACRES, MIN. 40, MAX. 200

POPULATION: TO SUPPORT CRITICAL MASS OF WALK-TO DESTINATIONS.



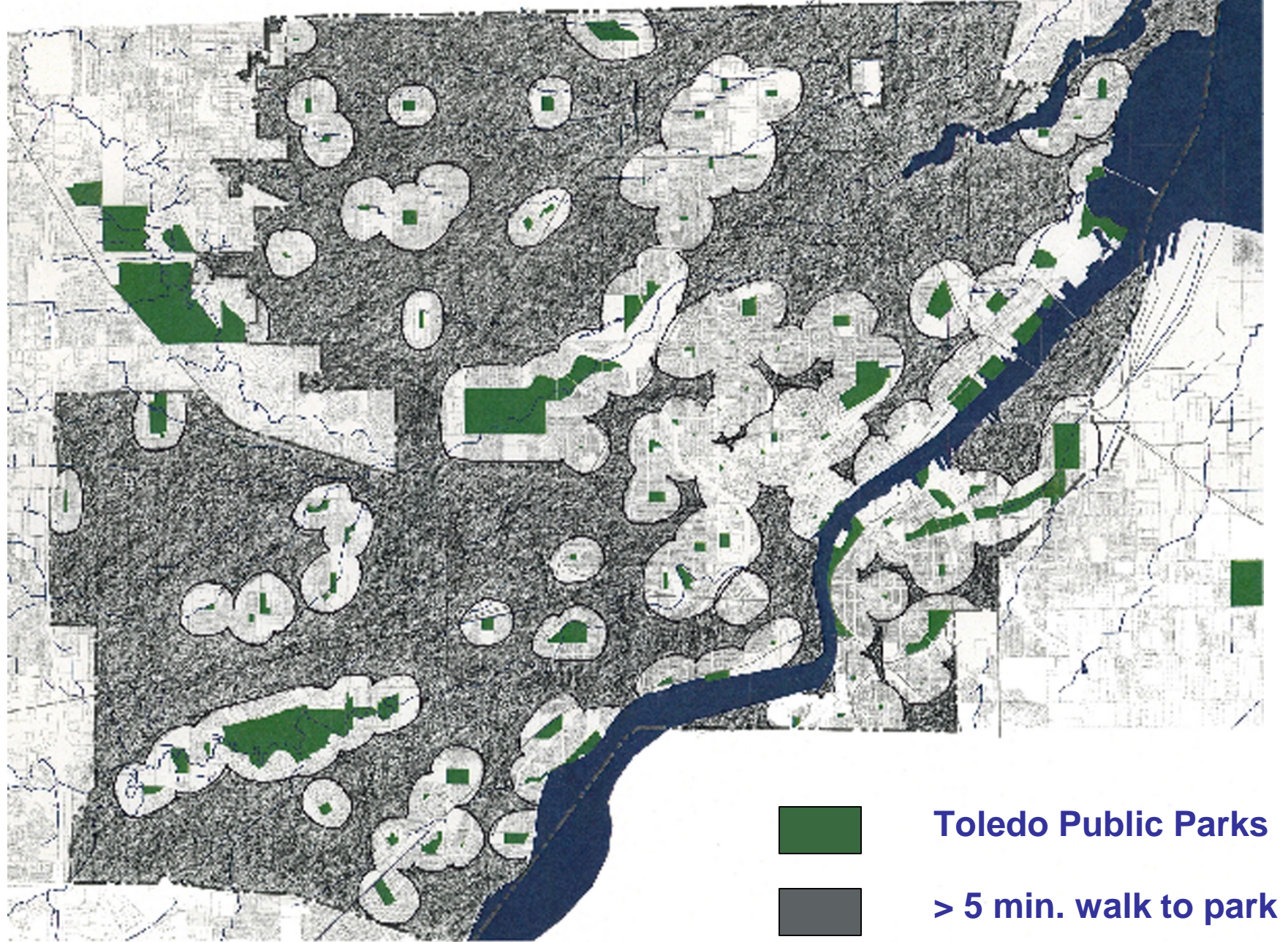
NORTH
75% OF BLDGS.
ORIENTED E-W



© FARR ASSOCIATES

A SUSTAINABLE NEIGHBORHOOD (BUILDING BLOCKS OF A SUSTAINABLE CORRIDOR)

PART THREE:
EMERGING
THRESHOLDS OF
SUSTAINABLE
URBANISM



Smart Growth Master Plan/Toledo, Ohio



Fingers of Nature



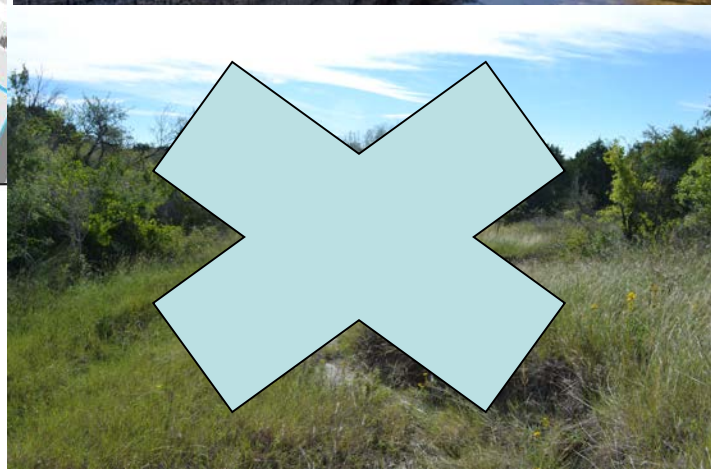
Fingers of Nature



- KEY**
- Major Arterial
 - +— Railroad
 - ⬡ Project Site
 - Lake, Pond or Creek
 - Civic Building
 - Other Buildings
 - Creek Buffer

Fingers of Nature





Fingers of Nature



Fingers of Nature





Fingers of Nature

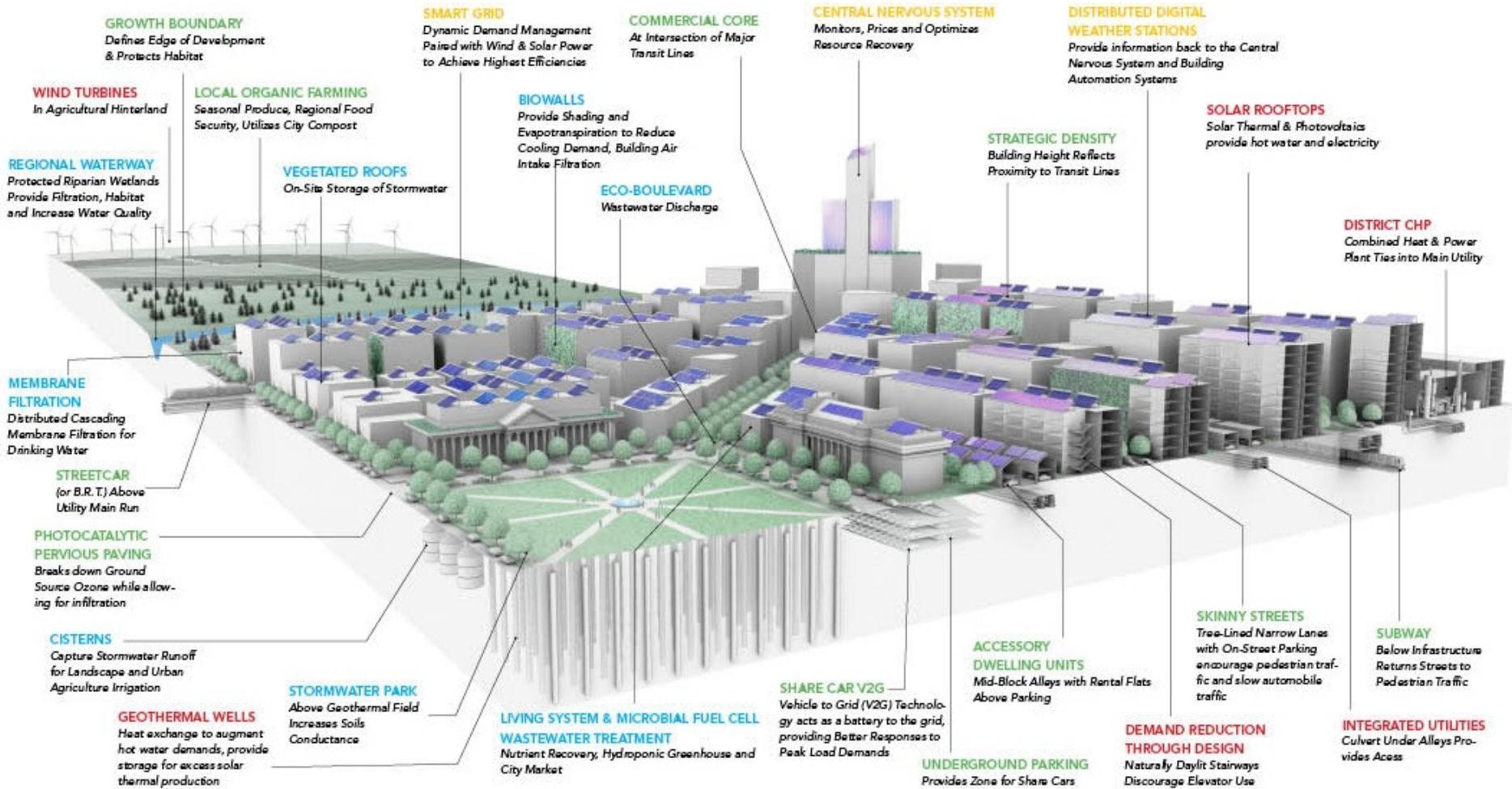


Code-Ready Sustainable Planning: Reducing the Gap Between What Plans Say and What Codes Do

By Douglas Farr



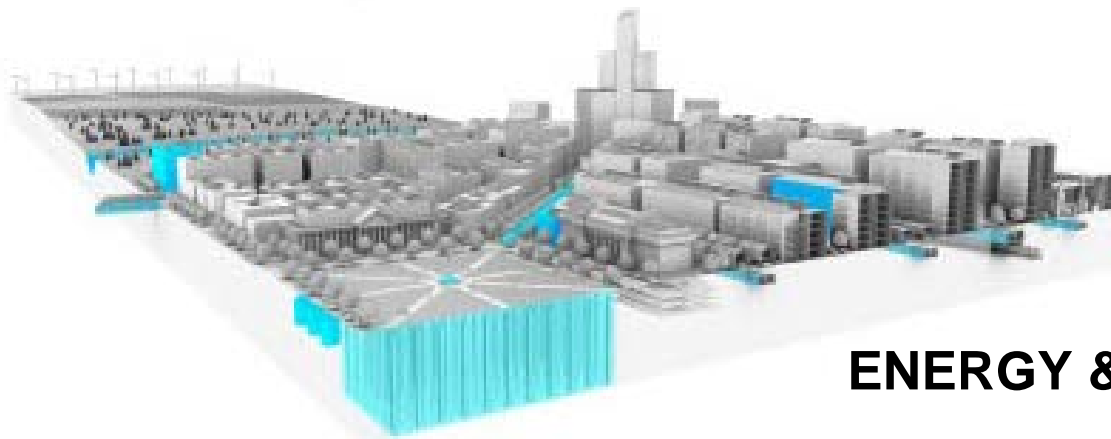
HIGH-PERFORMANCE PLANNING



HIGH-PERFORMANCE INFRASTRUCTURE



EQUITY & DATA



ENERGY & WATER





LAND USE & MOBILITY

PART FOUR:
CASE STUDIES IN
SUSTAINABLE
URBANISM

Relative Project Sizes

NOTE: All images to scale except the Green Line corridor.

Bethel Commercial Center (Chicago, IL) 
1/4 acre

Christie Walk (Adelaide, Australia) 
1/2 acre

BedZED (London, England) 
4 acres

Dockside Green (Victoria, Canada)
15 acres



High Point (Seattle, WA)
120 acres



Green Line Corridor (Chicago, IL)
6000+ acres





Southeast Aerial View

BedZED

South London, England

SU pp. 214-7



Live within a One Planet Footprint

Achieve zero net carbon emissions

Reduce heat consumption by 90%

Reduce potable H₂O consumption by 30%

15% of building materials reused/recycled

50% automotive fuel reduction in 10 yrs.

PV power for 40 electric vehicles in 10 yrs.

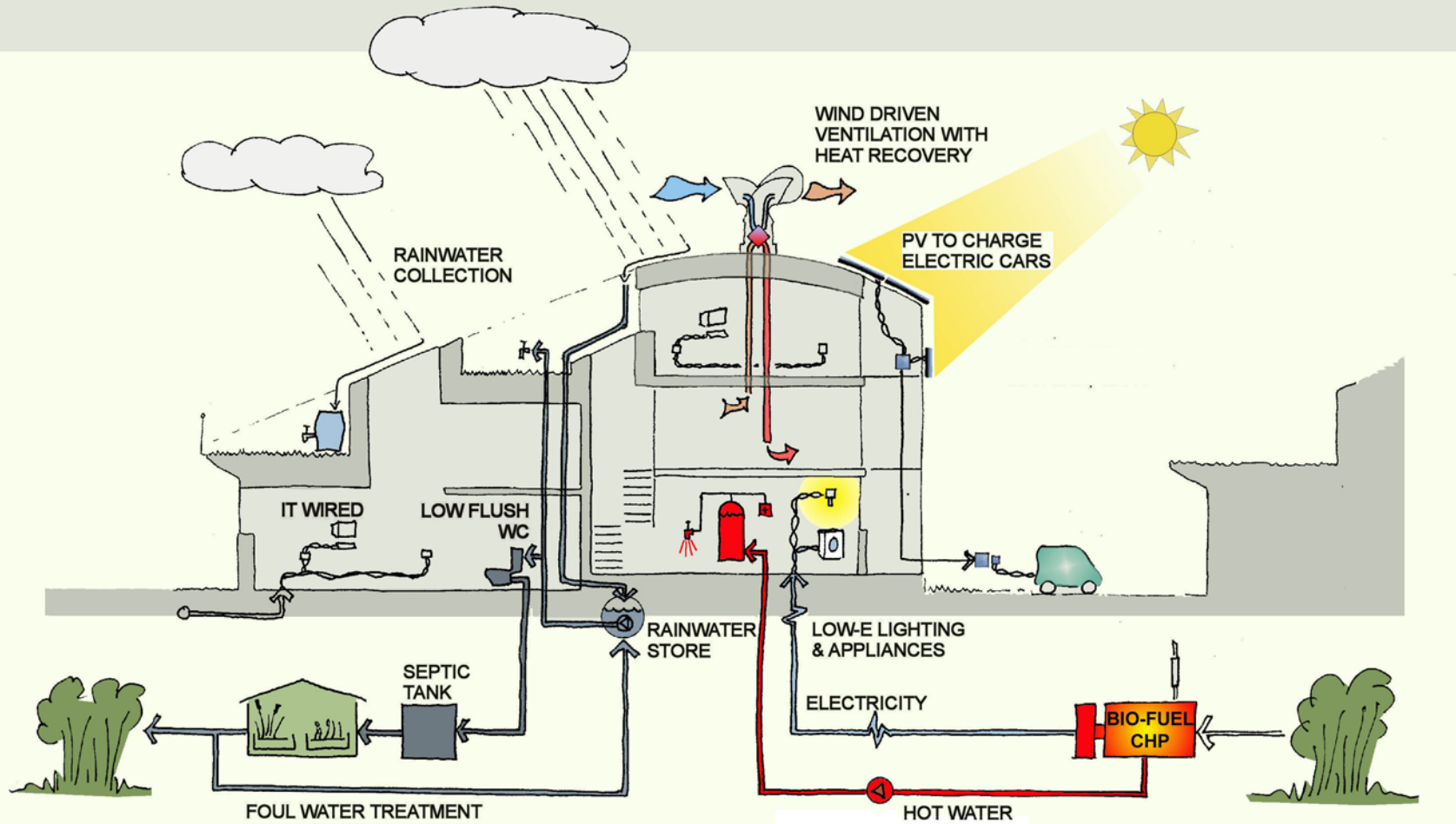
82 DU's, 26,910 s.f. office on 4.08 Acres

BedZED

South London, England

SU pp. 214-7

M&E SYSTEMS



Systems Integration

ARUP

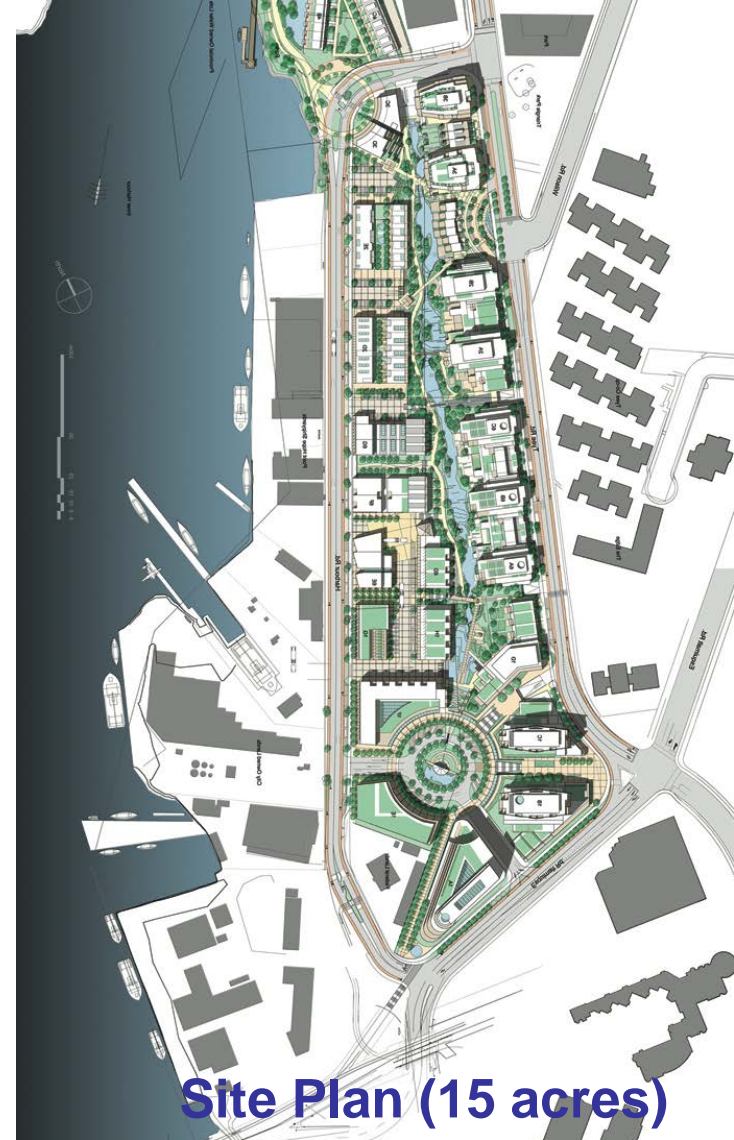
BedZED

South London, England

SU pp. 214-7

Zero Carbon	Minimization of carbon dioxide emissions from heating, cooling, lighting and providing power to buildings
Zero Waste	Minimization of waste and flows of waste to landfill as part of a resource-efficient society
Sustainable Transport	Provision of transport systems which minimize the need to travel and minimize the use of energy
Local and Sustainable Materials	Optimization of use of materials, in terms of their source and their performance
Local and Sustainable Food	Minimization of environmental degradation due to food production and transport, maximization of opportunities for use of local food supplies
Sustainable Water	Minimization of water consumption
Natural Habitats and Wildlife	Protection of the natural environment and the habitats it offers to flora and fauna
Culture and Heritage	Protection and enhancement of the cultural heritage in design and operation, and the sense of local and regional identity
Equity and Fair Trade	Promoting equity and fair trade within the community; local employment and affordable housing are emphasized
Health and Happiness	Promoting quality of life, well-being and healthy lifestyles

BioRegional
One Planet Communities
63%B&M/37%Conduct



- **All 26 buildings LEED Platinum certified**
- **Estimated energy savings of 45-55%**
- **Estimated potable water savings of 65%**
- **11% affordable housing**
- **Biomass cogeneration facility**
- **Bio-diesel facility**
- **Reinvigoration of harbor industry**
- **Dvlprs. reuse/recycle min. 90% of on-site waste**
- **Dedicated pedestrian and cyclist routes**

Dockside Green

Victoria, BC.

SU pp. 226-9



Harbour Street

Dockside Green

Victoria, BC.



Dockside Green
Victoria, BC.



Uptown Normal

Normal, IL
(1999)



© Bondy Studio '02

Stormwater Circle
Uptown, Normal, IL
(2002)



Stormwater Circle

Uptown, Normal, IL
(2010)



Stormwater Circle

Uptown, Normal, IL
(2010)



Stormwater Circle

Uptown, Normal, IL
(2010)



Uptown Normal Circle

Normal, IL
(2010)

2011 National Award for Smart Growth Achievement



LEED-ND

Federal Highway Administration
Federal Transit Administration



2012
Transportation Planning Excellence Award
Co-sponsored by the American Planning Association and
Transportation Research Board

Presented to
Town of Normal, Illinois
for the
Uptown Circle

Stormwater Circle

Uptown, Normal, IL
(2010)

NUDGES


**Your SUV Makes
You Look Fat™**



**Sex is better
within
1/4 mile of
public transit**

I thought he was **hot**
until I realized he *drives*
more than 20,000 miles
a year!



A large, multi-story brick building with a prominent clock tower on the left side. The clock tower has a white clock face. The building has many windows and a modern architectural style. In the foreground, there is a large, circular fountain with water spraying upwards. Several people, including children and adults, are sitting on the edge of the fountain and playing in the water. There are trees and a grassy area around the fountain. The sky is blue with some clouds. The text "Thank You Leaders" is overlaid in the center of the image in a large, blue, outlined font.

Thank You Leaders