

A stylized map of California in a light olive green color. A specific corridor is highlighted in a darker shade of olive green, running from the northern coast down to the southern coast. The text 'Multi-Modal Corridor Report' is overlaid on this map.

# Multi-Modal Corridor Report

*Jonathan Brinkmann  
Principal Planner*

- ▶ **Multi-Modal Corridor (MMC) Background**
- ▶ **Transportation Agency for Monterey County (TAMC) MMC Plan**
- ▶ **Recommendation**



- ▶ Identified MMC alignment from Marina to Salinas
- ▶ Showed route along Imjin Parkway to Blanco Road Connector and Blanco to Salinas
- ▶ HMP assumed same MMC alignment
- ▶ Habitat and potential agricultural land impact concerns

- ▶ In 2006, stakeholders identified an alternative MMC route
- ▶ Alternative route followed 9<sup>th</sup>/8<sup>th</sup> Street/Intergarrison/Reservation/Davis Roads
- ▶ Alternative reduced impacts to habitat corridor lands
- ▶ 2010 MMC Realignment MOA replaced 1997 Base Reuse Plan alignment with the alternative route

# Project History



- ▶ In 2013, TAMC received a Caltrans Transportation Planning grant to begin/reassess MMC planning
  
- ▶ In 2014, at TAMC's request, FORA Board approved a motion supporting new MMC alignment (8<sup>th</sup> Street/2<sup>nd</sup> Avenue/Imjin Parkway/Reservation Road/Davis Road)
  
- ▶ In 2015, TAMC adopted the MMC Conceptual Plan
  - Identified approval of a Memorandum of Understanding by TAMC's Partner Agencies would provide concept support and replace previous agreements



# TAMC MMC Presentation to FORA Board



- ▶ Preserve a corridor
- ▶ Plan for regional high quality transit
- ▶ Provide a regional bicycle route
- ▶ Improve pedestrian safety
- ▶ Develop a conceptual corridor design
- ▶ Estimate the cost of implementation



# Partner Agencies

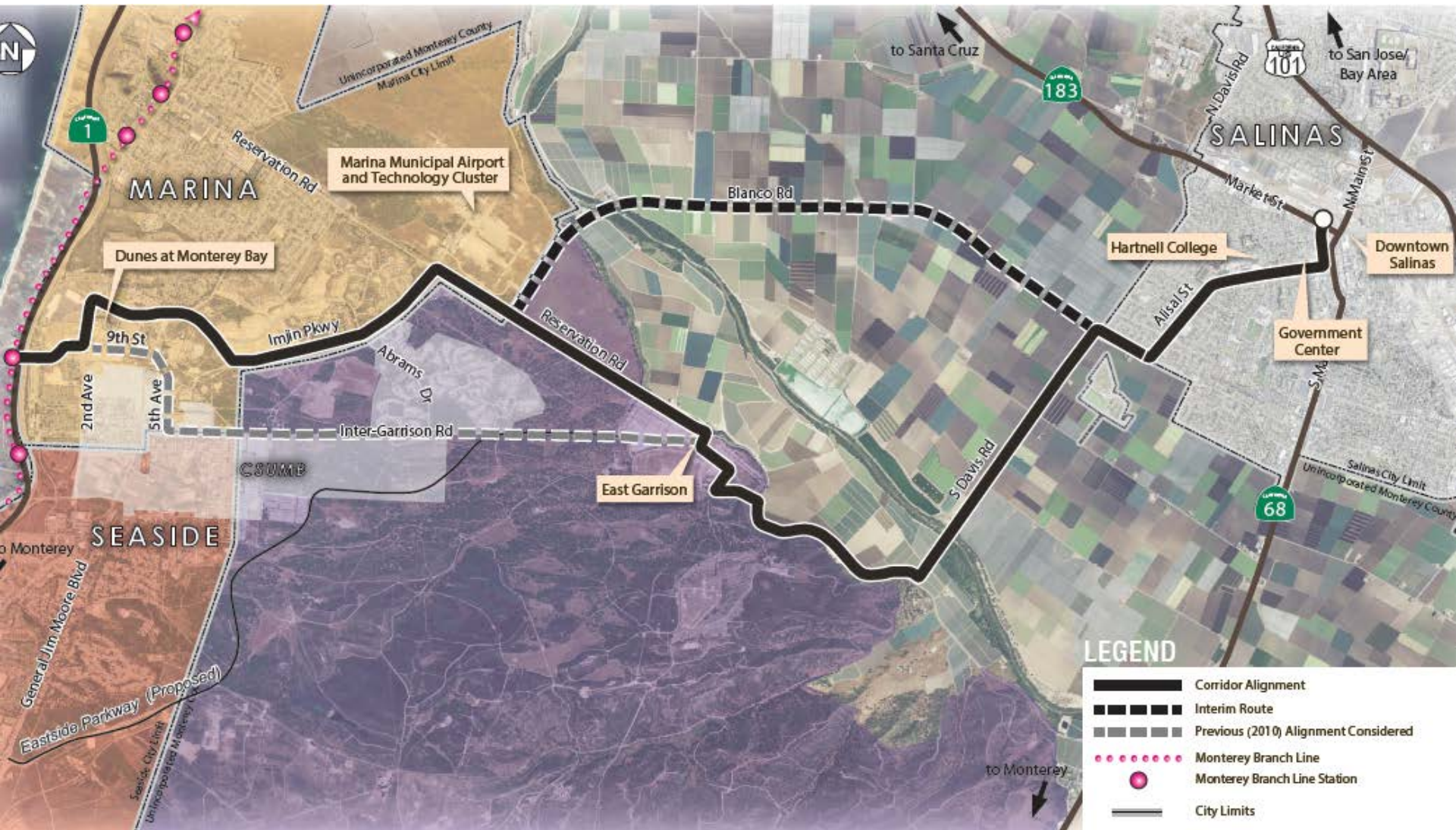


# Community Input





# Preferred Alignment





# Enhanced Transit



Photo Source: www.1.800.800.800.org

**Exclusive Bus Lanes**



**Separate Busway**



# Enhanced Intersections & Stops



## Queue Jumps



## Transit Island Buffer



## Bicycle Signals



Image Source: [www.fhdcivcycling.com](http://www.fhdcivcycling.com)



Image Source: [www.pedbikeimages.org](http://www.pedbikeimages.org) / Don Burden

## Class I Bikeways (Off-Street Shared Use Path)



Image Source: [www.bikeportland.org](http://www.bikeportland.org) (photo by Joel Mann)

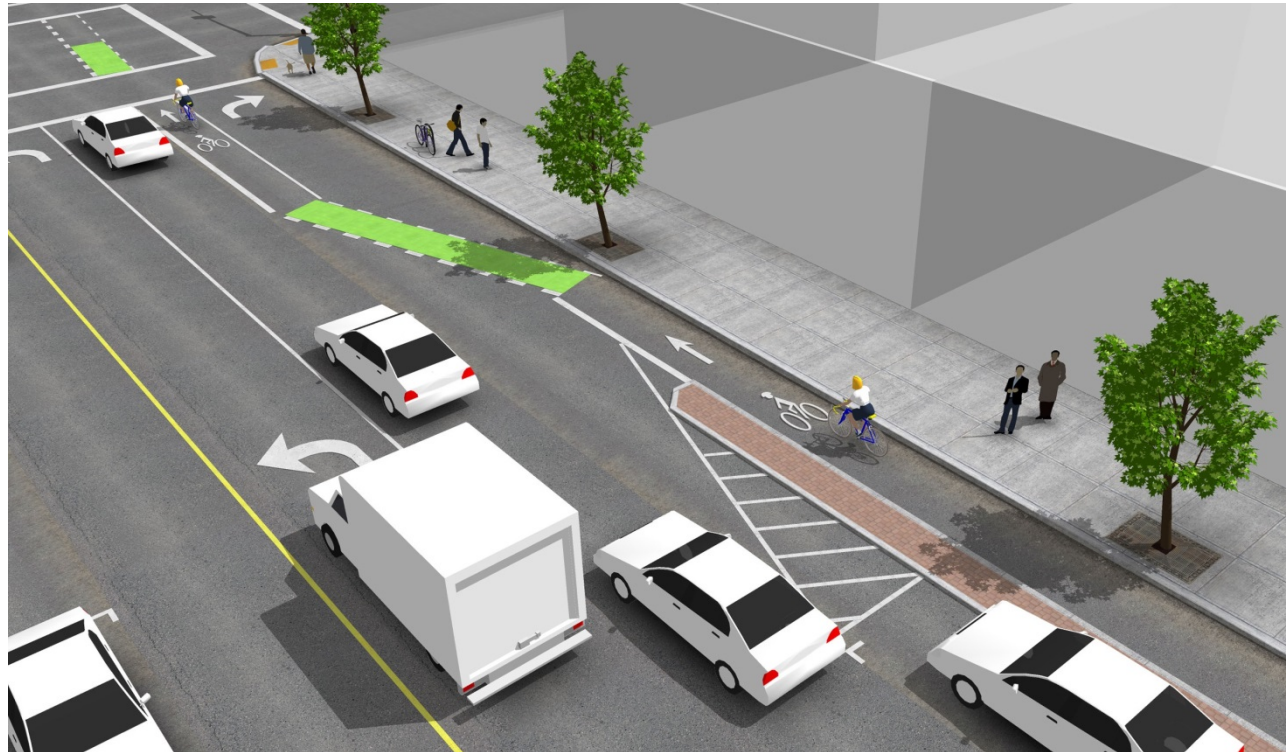


Image Source: NACTO Urban Bikeway Design Guide, 2011

## Cycle Tracks



# Enhanced Bike - Green Treatments





- ▶ Approve Resolution 17-xx (**Attachment A**)
  - Authorize termination of 2010 Agreement (**Exhibit 1**)
  - Authorize signing of New Alignment Agreement (**Exhibit 2**)
  - Make finding that additional environmental analyses are not needed before entering the New Alignment Agreement because there have been no substantial project changes