



Marina-Salinas Multimodal Corridor Conceptual Plan

FORA Board

April, 10 2015



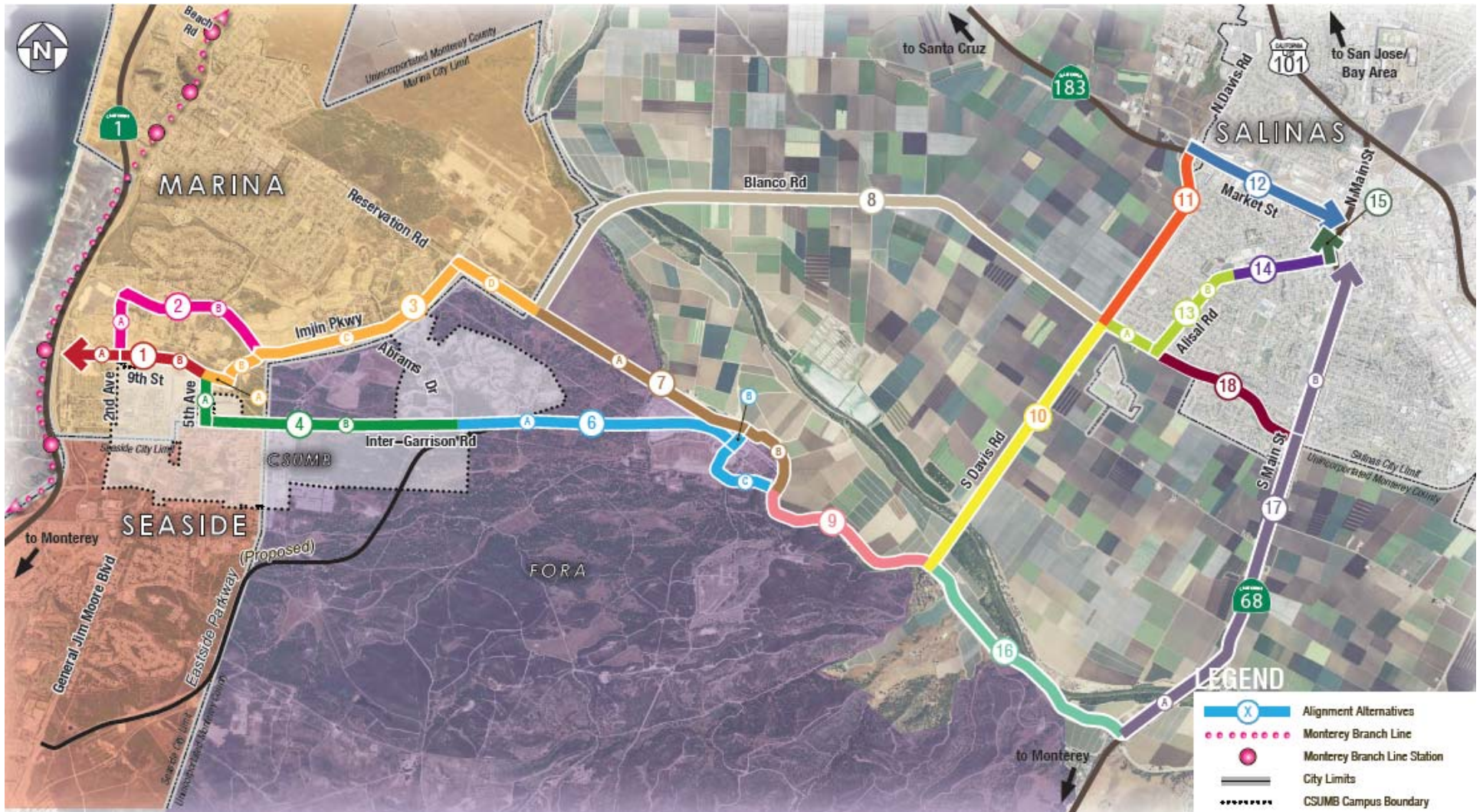
Goals

- **Preserve a corridor**
- Plan for regional high quality transit
- Provide a regional bicycle route
- Improve pedestrian safety
- Develop a conceptual corridor design
- Estimate the cost of implementation

Partner Agencies



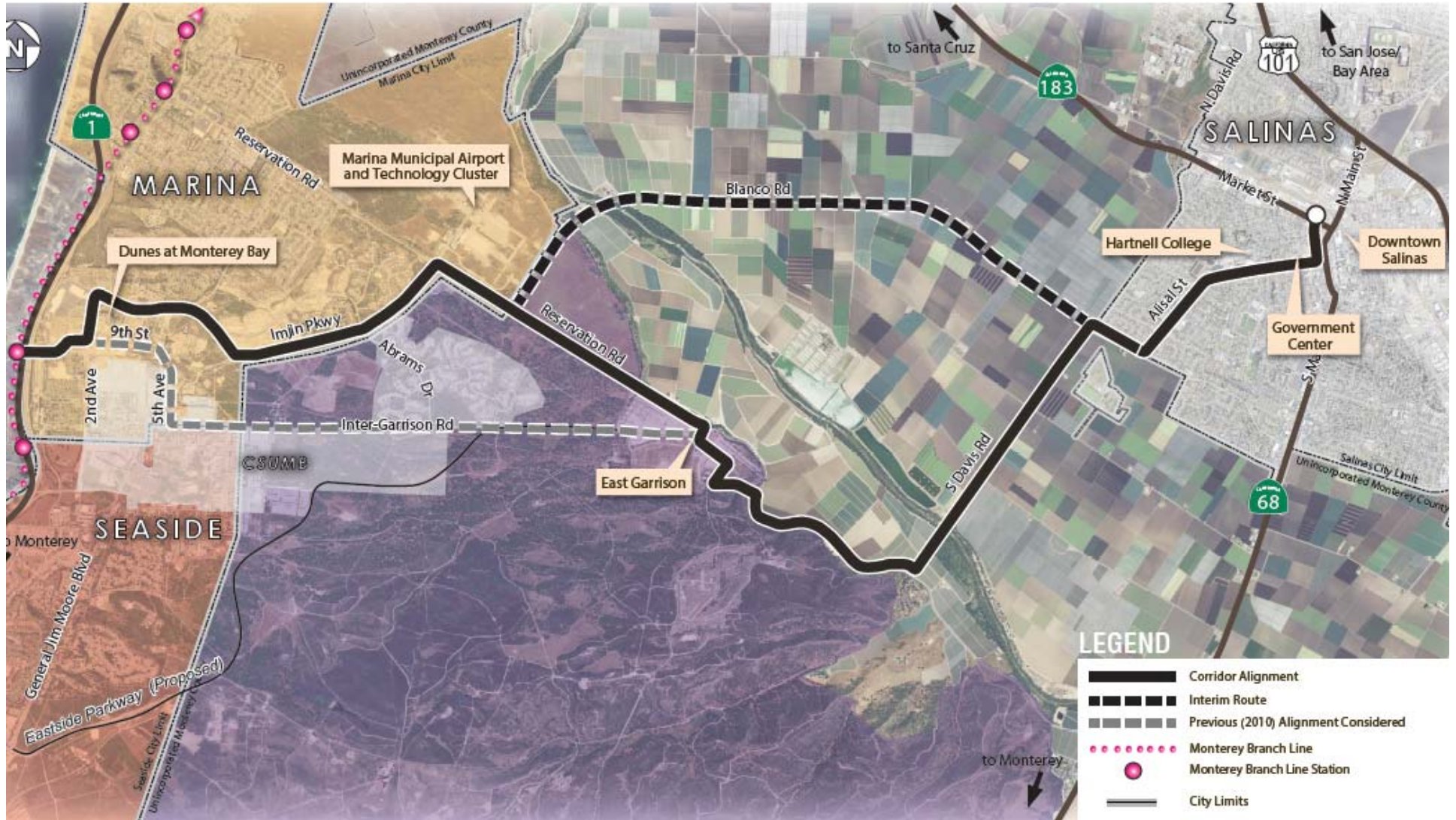
Overview



Community Input



Preferred Alignment



Enhanced Intersections & Stops



Queue Jumps



Transit Island Buffer



Bicycle Signals

Enhanced Transit



Photo Source: www.10news.com

Exclusive Bus Lanes



Separate Busway



Enhanced Bike



Image Source: www.fidicocycling.com



Image Source: www.pedbikeimages.org / Don Burden

Class I Bikeways (Off-Street Shared Use Path)



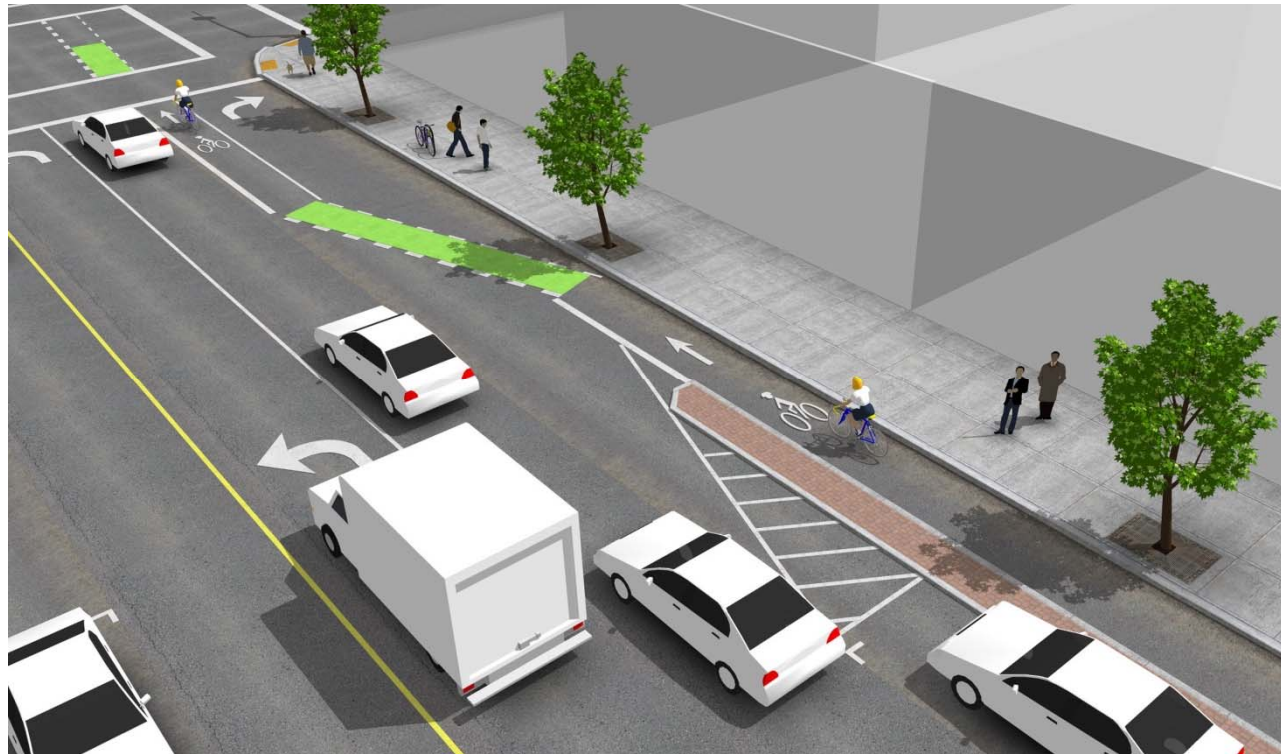
Image Source: www.bikeportland.org (photo by Joel Moore)



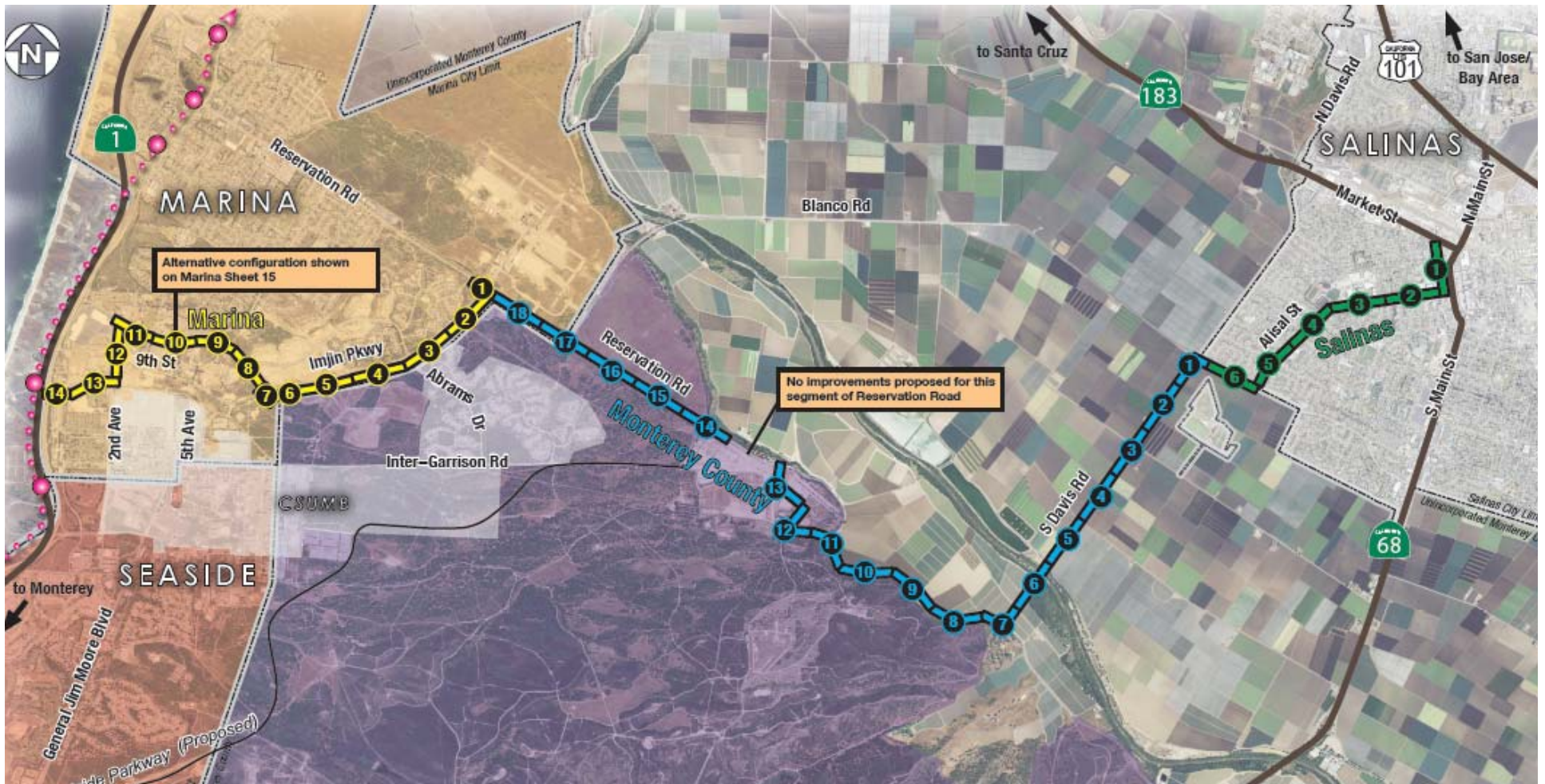
Image Source: NACTO Urban Bikeway Design Guide, 2011

Cycle Tracks

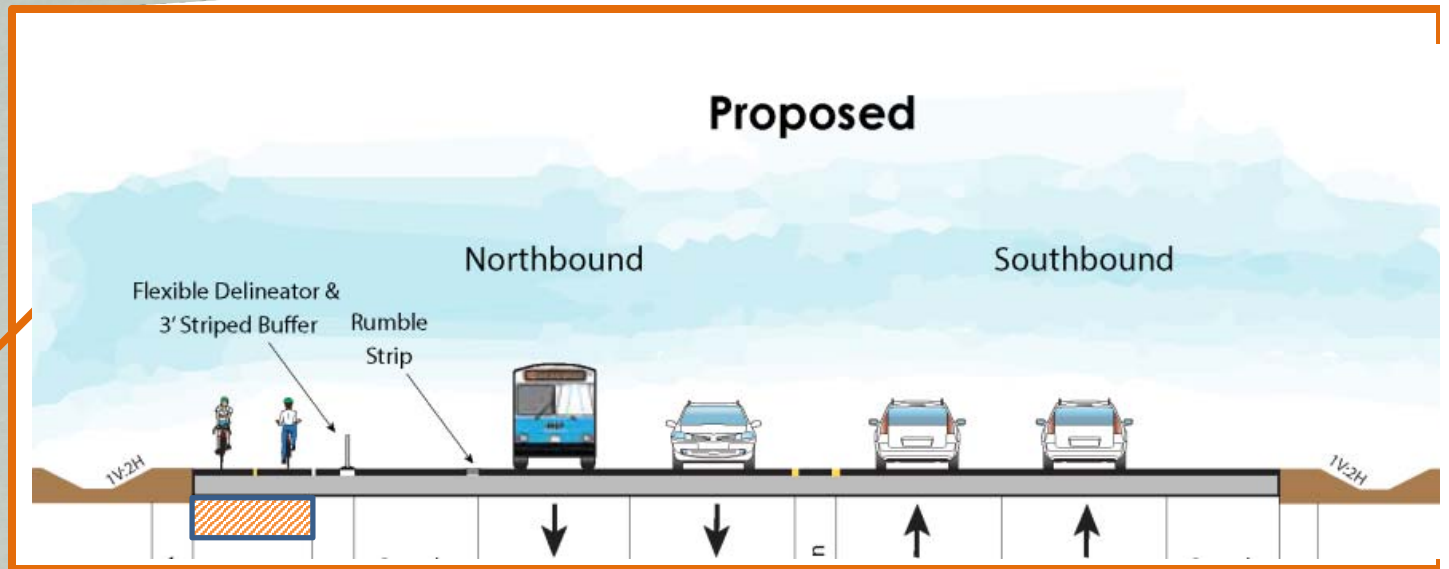
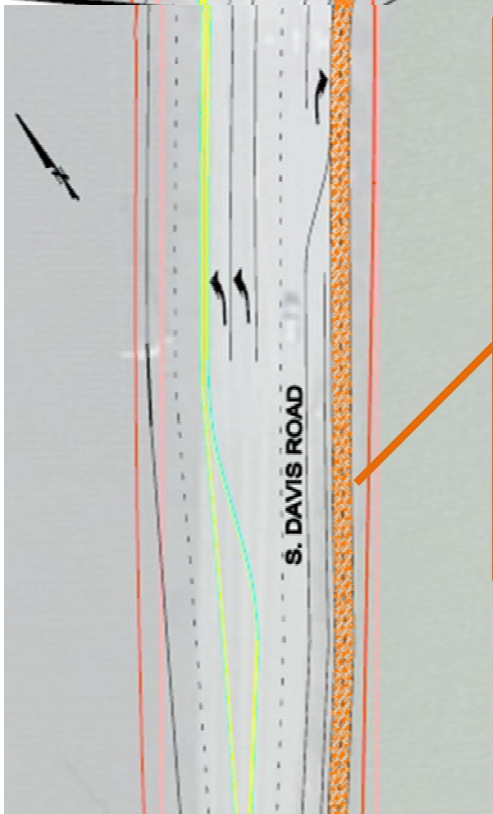
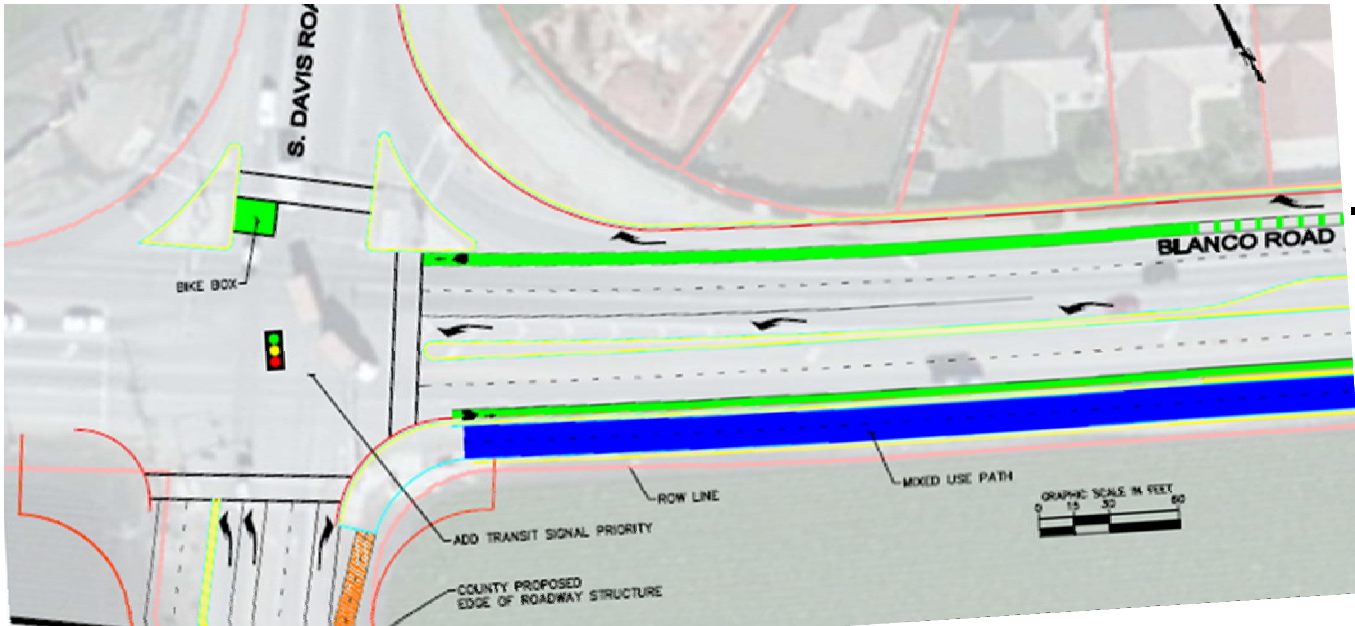
Enhanced Bike – Green Treatments



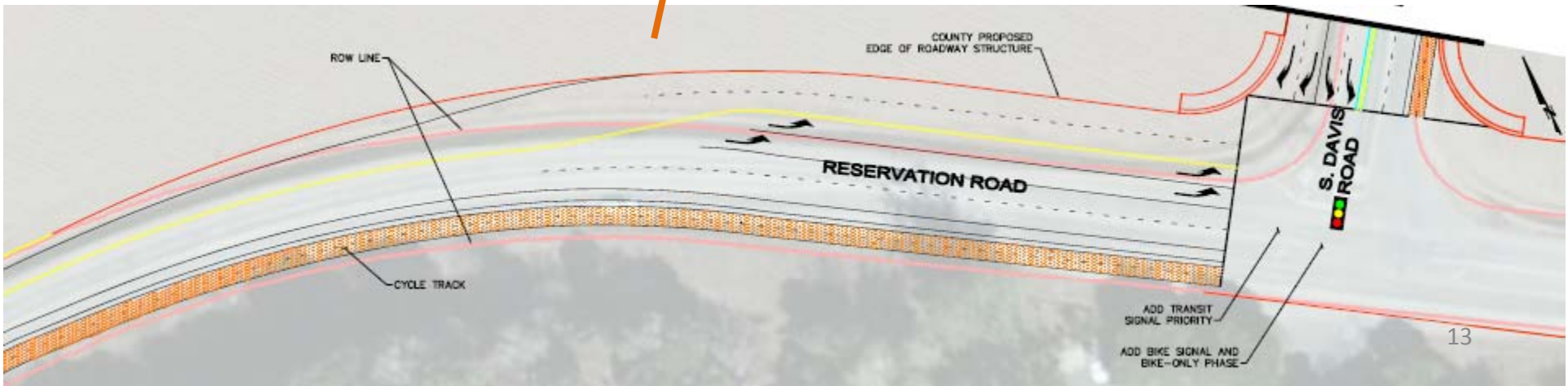
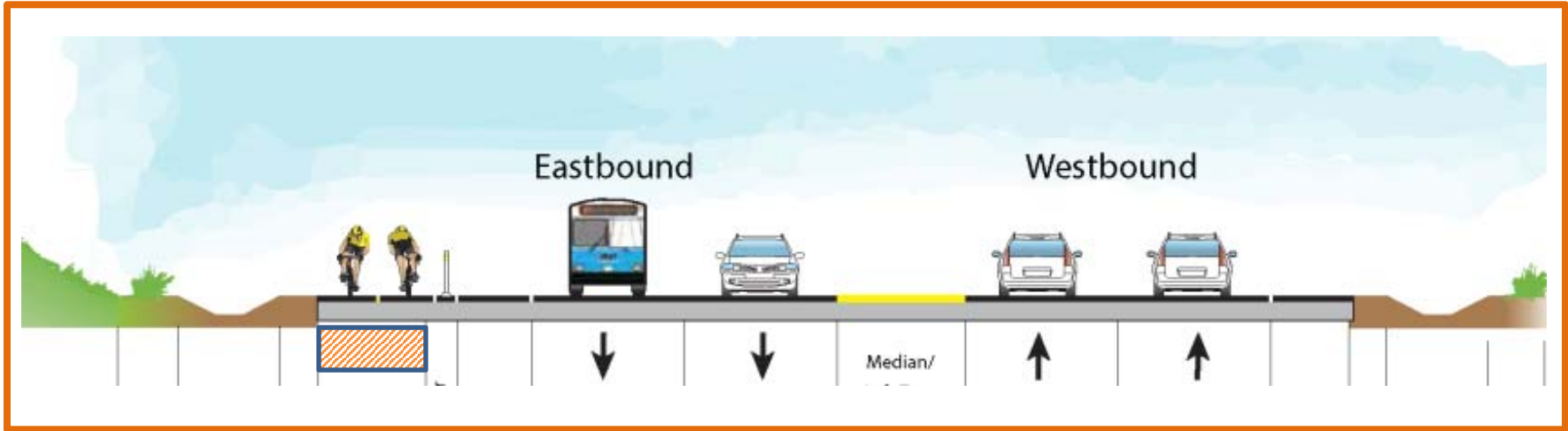
Conceptual Design



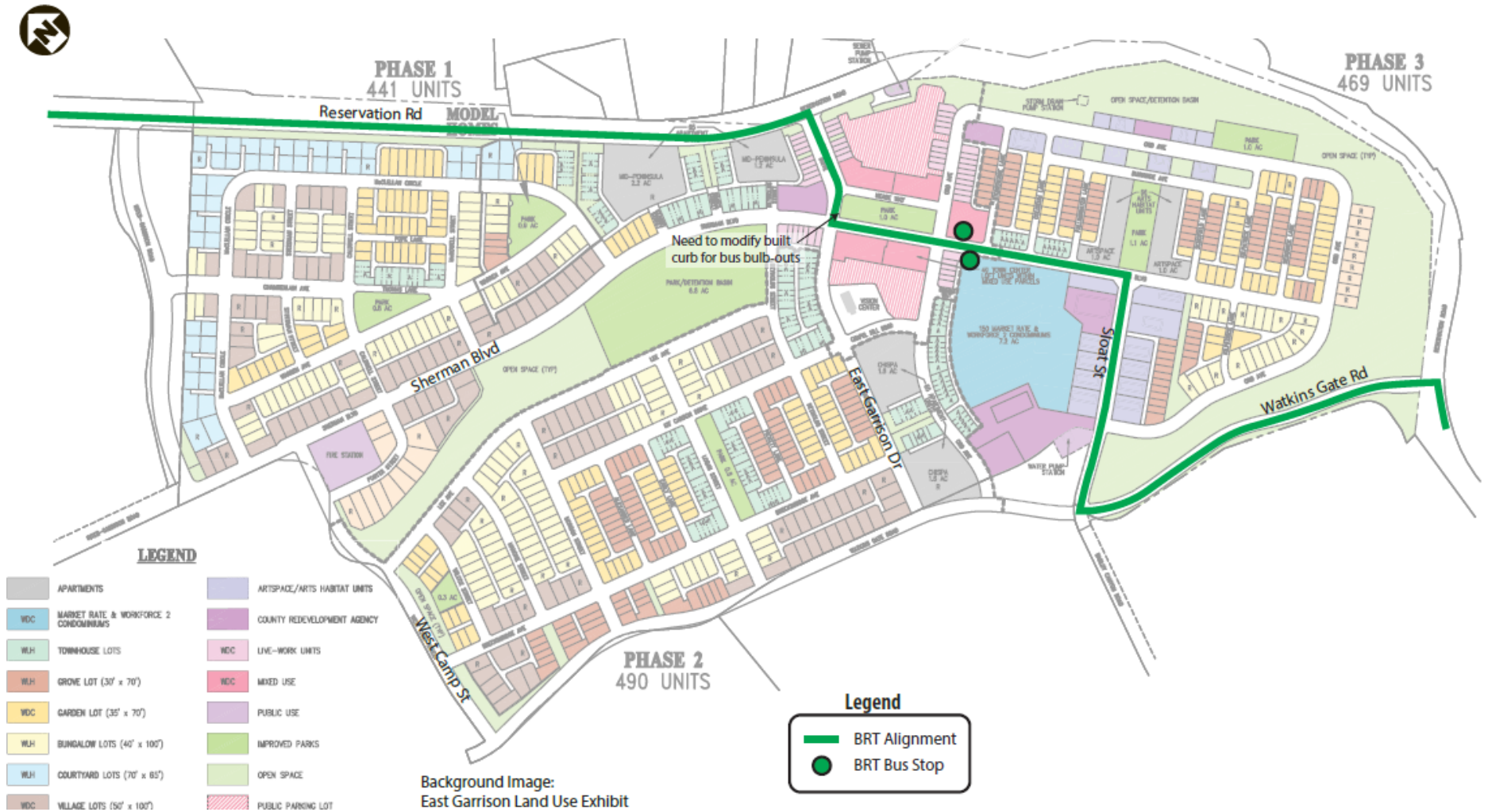
S. Davis Rd



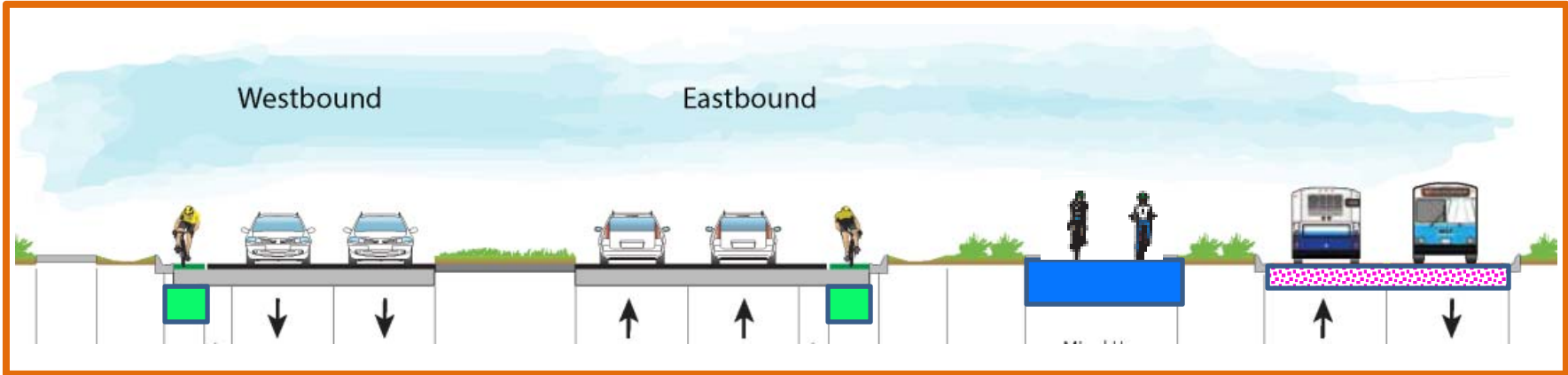
Reservation Rd (Davis Rd – Watkins Gate)



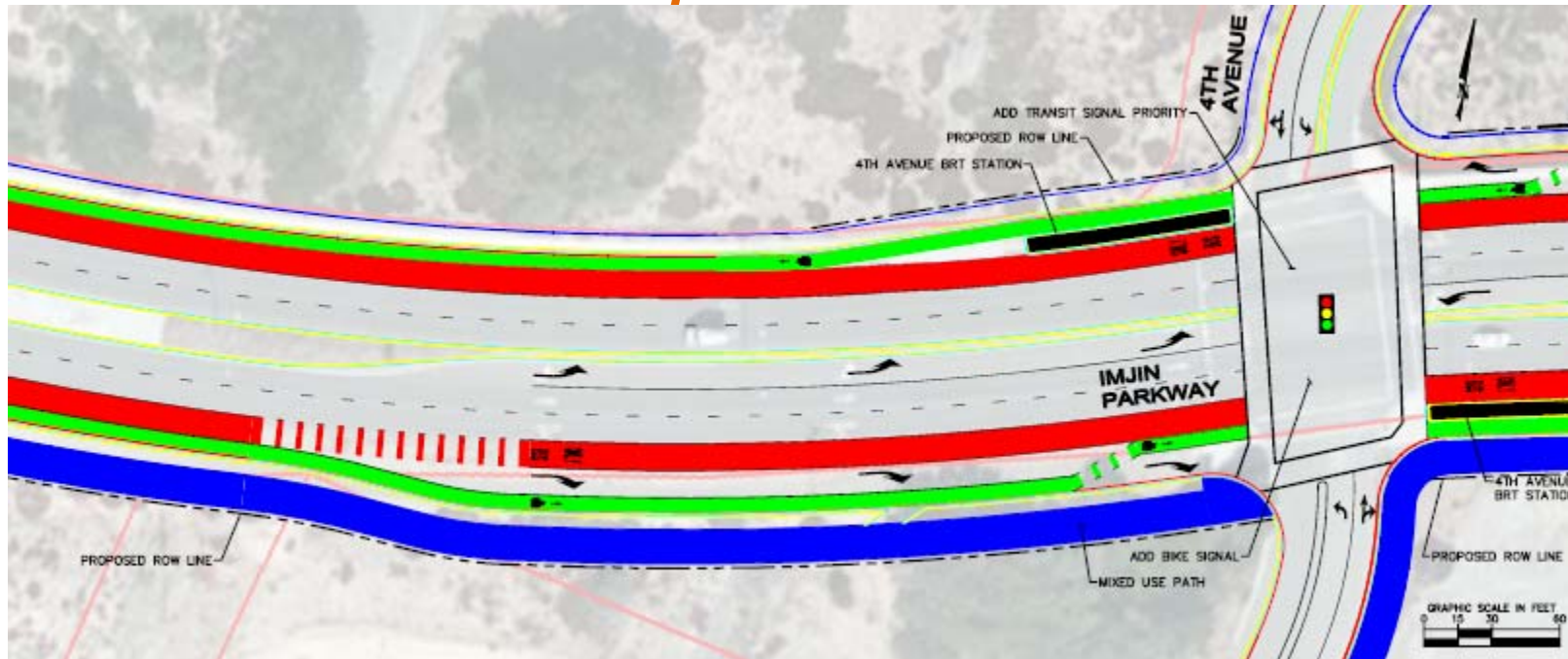
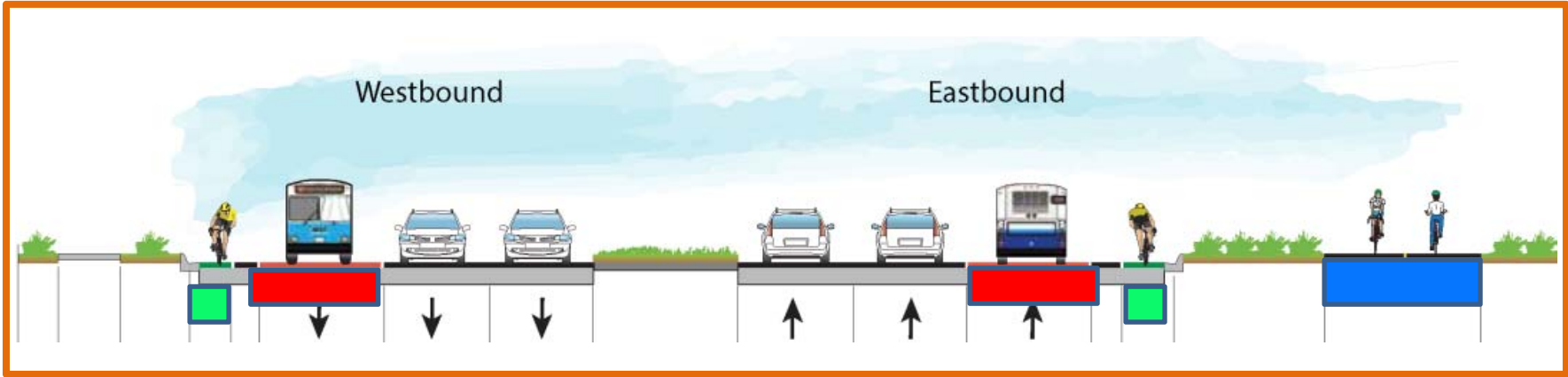
East Garrison (Transit)



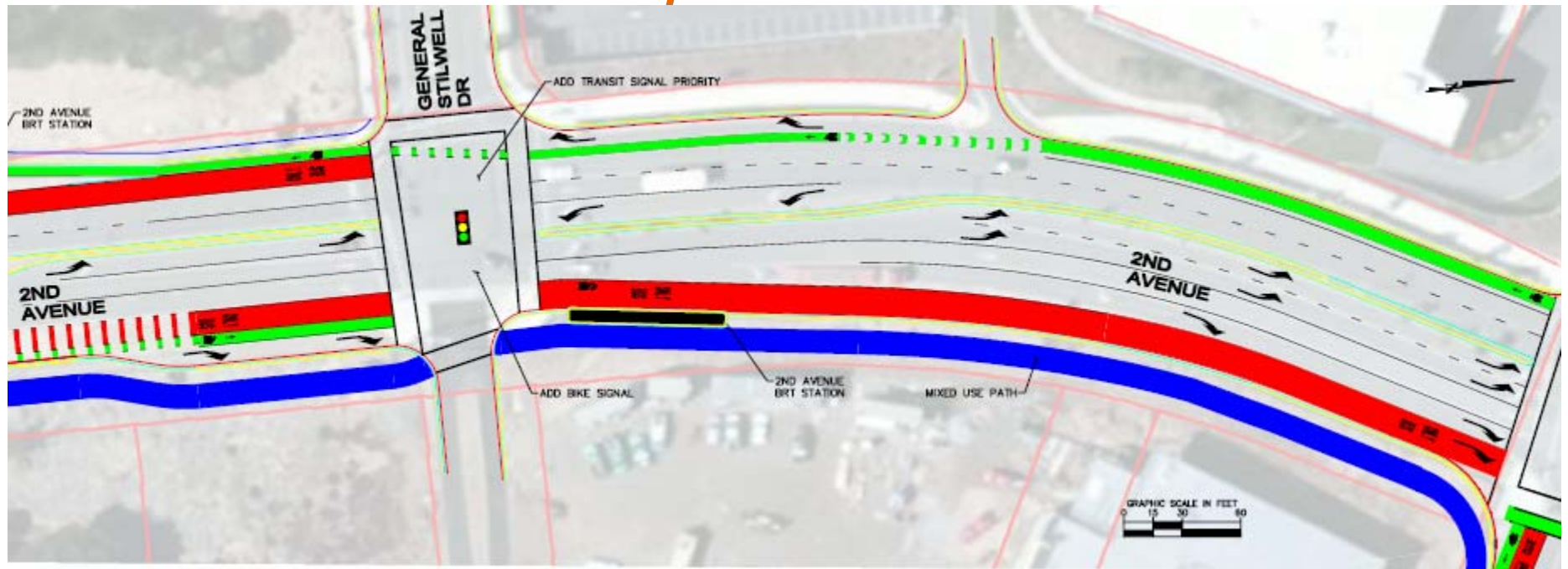
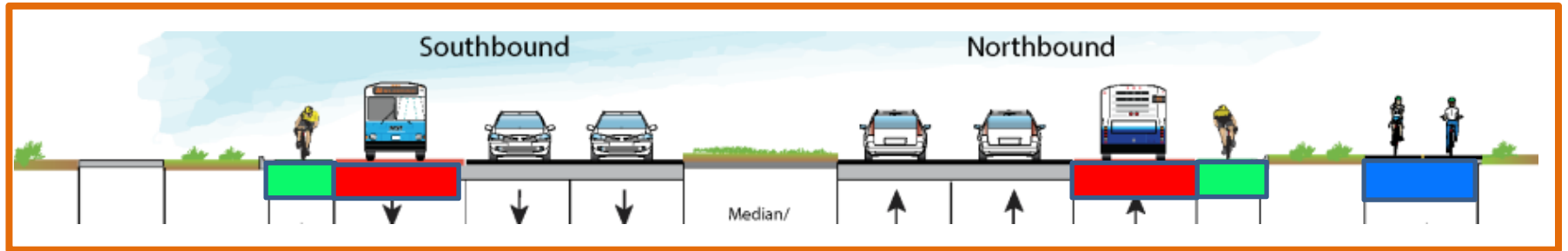
Imjin Parkway (Reservation Rd – Imjin Rd)



Imjin Parkway (Imjin Rd – 2nd Ave)



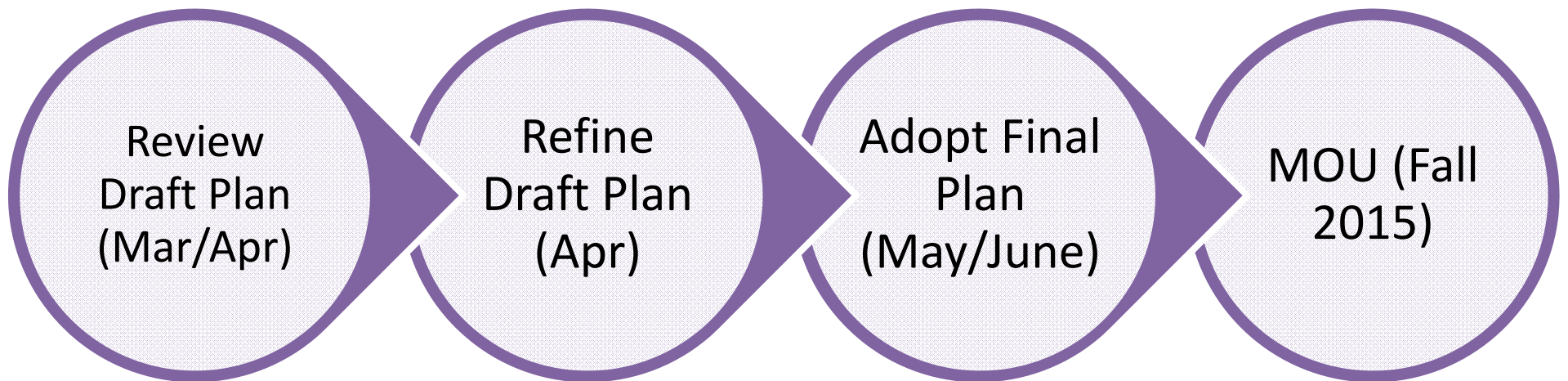
2nd Avenue (Imjin Pkwy – 9th St)



Implementation

- Short-term/Long-term
- Phased
- Enhance existing projects
- Federal, State and Local Funds

Next Steps



Contact

Ariana Green

Project Manager

831-775-4403

ariana@tamcmonterey.org

